
Report To:	Health & Social Care Committee	Date:	23 February 2017
Report By:	Brian Moore Corporate Director, (Chief Officer) Inverclyde Health and Social Care Partnership (HSCP)	Report No:	SW/11/2017/SMcA
Contact Officer:	Sharon McAlees Head of Criminal Justice and Children's Services	Contact No:	715282
Subject:	INVERCLYDE COMMUNITY IMPROVEMENT PLAN 2017-2022	JUSTICE	OUTCOMES

1.0 PURPOSE

- 1.1 The purpose of this report is to present to the Health & Social Care Committee the Inverclyde Community Justice Outcomes Improvement Plan 2017-2022.

2.0 SUMMARY

- 2.1 The Community Justice (Scotland) Act was given royal assent in March 2016. This provides the statutory framework for implementation of the new model of community justice. The Act stipulates adherence must be given to the National Strategy for Community Justice; the Community Justice Outcomes Performance and Improvement Framework and associated Guidance in the development of a local Community Justice Outcomes Improvement Plan and subsequent Annual Reports.
- 2.2 This is a high level plan and outlines key building blocks from which a range of actions will be determined during the lifespan of this plan. Progress on this plan will be reported on an annual basis.
- 2.3 An easy read version was also developed that encapsulates the main points. This was used during the period of consultation.
- 2.4 The Inverclyde Community Justice Outcomes Improvement Plan needs to be submitted to the Scottish Government on 31st March 2017 while also being made available online. Full local responsibility for community justice will commence on 1st April 2017.

3.0 RECOMMENDATIONS

- 3.1 It is recommended that the Health and Social Care Committee:
- Note and give comment on the Inverclyde Community Justice Outcomes Improvement Plan 2017-2022.
 - Approve submission of the Plan to the Scottish Government, pending the addressing of any amendments necessary following comment from the Health and Social Care Committee and partners.

Brian Moore
Corporate Director, (Chief Officer)
Inverclyde HSCP

4.0 BACKGROUND

- 4.1 The Community Justice (Scotland) Act 2016 provides the statutory framework for implementation of the new model of community justice in Scotland. This new model will enable local strategic planning and delivery of community justice services with a focus on collaboration and involvement at a locality level and with people who use services.
- 4.2 The Act outlines the functions for community justice partners and expectations around local arrangements in developing a Community Justice Outcomes Improvement Plan (CJOIP).
- 4.3 The National Strategy for Community Justice; Community Justice Outcomes Performance and Improvement Framework and associated Guidance were formally launched and published on 24th November. These detail key components in the development of local CJOIPs. These include:

Component	Development
a) A Community Justice Needs Assessment	An initial Community Justice Profile for Inverclyde was prepared and information from this is incorporated into the CJOIP while information collated has also helped to identify gaps in service. This profile will be revised on an on-going basis to ensure consideration is given to the latest statistical information and trends.
b) A Participation Statement	This is included within the body of the CJOIP and outlines engagement activity undertaken to date. It also recognises this is an initial phase and a Participation Strategy and Plan have yet to be developed.
c) Cognisance of the Community Justice Outcomes Performance and Improvement Framework	Each measure is outlined alongside respective actions to address these. In addition, following two development sessions, the Inverclyde Community Justice Partnership identified a range of local outcome measures.
d) An Equality Impact Assessment	This was developed with the portfolio lead of the Community Justice Partnership responsible for “Communities improve their understanding and participation in community justice” outcome and the Inverclyde Council Equalities Officer. An easy read version of the CJOIP was also developed and used with service user engagement and in the staff focus group. It was also made available during the formal period of consultation.
e) A period of formal consultation	This commenced on 9th December and concluded on 11th January. There were responses from SSAFA (Soldiers, Sailors and Airmen Family Association, Police Scotland, Your Voice (views from 36 people) and Inverclyde Council Housing Policy Officer. Overall feedback was positive and people recognise the potential for community justice making a difference in Inverclyde; however, there was also a request for more detail in the implementation of the CJOIP.

- 4.4 Minor amendments have been made to the CJOIP following the consultation period. There will also be opportunity to develop more detail around key actions during further engagement events planned over the coming year.
- 4.5 An implementation structure has been agreed by the Inverclyde Community Justice Partnership whereby there is a portfolio lead for each of the four structural community justice outcomes. This is outlined below:

Structural Outcome	Portfolio Lead
1. Communities improve their understanding and participation in community justice.	Alex Meikle Inverclyde CVS
2. Partners plan and deliver services in a more strategic and collaborative way.	Andy Lawson Police Scotland
3. People have better access to the services they require, including welfare, health and wellbeing, housing and employability.	Andrina Hunter HSCP
4. Effective interventions are delivered to prevent and reduce the risk of further offending.	Audrey Howard HSCP

- 4.6 In addition, the Inverclyde Community Justice Partnership is at the early stages of leading on the development of a regional Early Intervention Strategy and planning a joint event with the RSL Liaison Group and the Housing Partnership Group.
- 4.7 The whole essence of the new Community Justice model is in being able to develop local services based on local need. This is an opportune time with the changes introduced by the Community Empowerment (Scotland) Act 2015 and the development of Health and Social Care Partnerships, which also focus on locality planning, to adopt a whole systems approach. It is also an opportunity to work collaboratively with community justice partners.

5.0 IMPLICATIONS

FINANCE

- 5.1 A Community Justice Lead Officer was appointed in September 2015 using the Scottish Government's transition funding allocation of £50,000 to Inverclyde. There is however an annual shortfall and Criminal Justice Social Work budget is currently being utilised to meet these costs.
- 5.2 A further funding allocation of £50,000 was agreed by the Scottish Government for the period 2016 / 2017 and more recently 2017 / 2018. However, no further funding has at this stage been agreed by the Scottish Government although discussions are ongoing. This highlights the temporary nature of funding and the need to articulate at appropriate national forums the case for mainstreaming funding for ensuring the successful implementation of the community justice agenda.
- 5.3 The CJOIP may need to be revised if future funding is not secured to support the local implementation of Community Justice.
- 5.4 As outlined in the National Strategy for Community Justice; the Community Justice Outcomes, Performance and Improvement Framework and associated Guidance, there is an expectation that partner resources will be leveraged to support change and local innovation. Inverclyde Community Justice Partnership has requested all community justice statutory partners to identify resources in kind that they can commit to local arrangements.

Financial Implications:

One off Costs

Cost Centre	Budget Heading	Budget Years	Proposed Spend this Report £000	Virement From	Other Comments

Annually Recurring Costs/ (Savings)

Cost Centre	Budget Heading	With Effect from	Annual Net Impact £000	Virement From (If Applicable)	Other Comments

LEGAL

- 5.5 The Community Justice (Scotland) Act was given royal assent in March 2016. This provides the legal framework to support the new model.

HUMAN RESOURCES

- 5.6 There are no human resources issues within this report.

EQUALITIES

- 5.7 Improving access to services is one of the common outcomes of Community Justice and this encompasses removing any potential barriers.

Has an Equality Impact Assessment been carried out?

✓	YES (see attached appendix)

REPOPULATION

- 5.8 There are no repopulation issues within this report.

6.0 CONSULTATION

- 6.1 This report has been prepared by the Chief Officer, Inverclyde Health and Social Care Partnership (HSCP) after due consultation with statutory and third sector partners.

7.0 BACKGROUND PAPERS

- 7.1 None.

Inverclyde Community Justice Outcomes Improvement Plan 2017-2022



**Inverclyde Community
Justice Partnership**

This document can be made available in other languages, large print, and audio format upon request.

Arabic

هذه الوثيقة متاحة أيضا بلغات أخرى والأحرف الطباعية الكبيرة وبطريقة سمعية عند الطلب.

Cantonese

本文件也可應要求，製作成其他語言或特大字體版本，也可製作成錄音帶。

Gaelic

Tha an sgrìobhainn seo cuideachd ri fhaotainn ann an cànanan eile, clò nas motha agus air talp ma tha sibh ga iarraidh.

Hindi

अनुोध पर यह दस्तावेज़ अन्य भाषाओं में, बड़े अक्षरों की छापाई और सुनने वाले माध्यम पर भी उपलब्ध है।

Mandarin

本文件也可應要求，製作成其它語言或特大字體版本，也可製作成錄音帶。

Polish

Dokument ten jest na życzenie udostępniany także w innych wersjach językowych, w dużym druku lub w formacie audio.

Punjabi

ਇਹ ਦਸਤਾਵੇਜ਼ ਹੋਰ ਭਾਸ਼ਾਵਾਂ ਵਿਚ, ਵੱਡੇ ਅੱਖਰਾਂ ਵਿਚ ਅਤੇ ਆਡੀਓ ਟੇਪ 'ਤੇ ਵਿਕਲਪ ਵੀ ਦਿੱਤਾ ਵੀ ਮੰਗ ਕੇ ਲਿਆ ਜਾ ਸਕਦਾ ਹੈ।

Urdu

درخواست پر یہ دستاویز دیگر زبانوں میں، بڑے حروف کی چھپائی اور سننے والے ذرائع پر بھی مہر ہے۔

Inverclyde HSCP, Hector McNeil House
7-8 Clyde Square, Greenock PA15 1NB
01475715372
communityjustice@inverclyde.gov.uk



Inverclyde Community
Justice Partnership

Contents

1. Foreword	4
2. Introduction	5
2.1 Vision	6
2.2 The Purpose and Scope of this Community Justice Outcomes Improvement Plan	8
2.2 Cross Cutting Themes	9
3. Where Are We Now?	10
3.1 National Context	10
3.2 Local Context	12
3.3 Demographic Profile	13
3.3 Inverclyde Community Justice Partnership	29
4. Where Do We Want To Be?	31
4.1 Outcomes We Want To Achieve	31
5. How Will We Get There?	34
5.1 Participation Statement	34
5.2 Our Workplan	39
6. Going Forward	72
Appendix A Key National Strategies and Legislation for Community Justice	73
Appendix B Inverclyde Community Justice Partnership Terms of Reference	77
Appendix C Wellbeing Localities	83

1. Foreword

Councillor Stephen McCabe, Leader of Inverclyde Council and Chair of Inverclyde Alliance Board

As Chair of the Inverclyde Alliance Board, the Inverclyde Community Planning Partnership, I welcome the Inverclyde Community Justice Outcomes Improvement Plan.

The new model for community justice, underpinned by the Community Justice (Scotland) Act 2016, has placed community justice at a local level where the planning for this landscape and decisions can be made from a local perspective. While a legal duty is placed on statutory Community Justice Partners; partnership working is central to improving community justice outcomes and the Inverclyde Alliance has an important role to play in facilitating this.

Inverclyde Community Justice Partnership are driving forward in implementing community justice at a local level and very much using existing local strategies and the principles of Getting it Right for Every Child, Citizen and Community as a strong foundation. This Plan strengthens local partnership arrangements and demonstrates a local commitment by partners in delivering positive community justice outcomes from the outset of this new partnership.

2. Introduction

Welcome to the first Inverclyde Community Justice Outcomes Improvement Plan that embraces the Inverclyde Alliance vision of “Getting it Right for Every Child, Citizen and Community” and developing a Nurturing Inverclyde approach.

During the period of shadow arrangements alongside North Strathclyde Community Justice Authority (NSCJA) the focus has been on developing the Inverclyde Community Justice Partnership and ensuring a smooth transition into the new model of community justice.

This Plan will make a significant contribution towards delivering the wellbeing outcomes where we want all our children, citizens and communities to be safe, healthy, nurtured, active, respected, responsible and included. These aspirations reflect the National Strategy for Community Justice (2016) vision that:

“Scotland is a safer, fairer and more inclusive nation where we reduce reoffending by addressing its underlying causes, while safely and effectively managing those who have committed offences, to help them integrate into the community and realise their potential for the benefit of all citizens.”

This Plan is outcome focused and will strengthen local partnership working, community capacity, engagement and involvement of a full range of stakeholders.

I am confident that this plan includes all the necessary building blocks for a robust and successful local model of community justice and I look forward to working with all the partners and wider stakeholders to bring this into fruition.

Sharon McAlees,

Chair of Inverclyde Community Justice Partnership

2.1 Vision

The Scottish Government's vision for community justice is that

“Scotland is a safer, fairer and more inclusive nation where we:

- Prevent and reduce further offending by addressing its underlying causes, and
- Safely and effectively manage and support those who have committed offences to help them reintegrate into the community and realise their potential for the benefit of all citizens.”

National Strategy for Community Justice, (2016)

This vision is underpinned by the following principles:

- People must be held to account for their offences, in a way that recognises the impact on victims of crime and is mindful of risks to the public, while being proportionate and effective in preventing and reducing further offending.
- Re-integrating those who have committed offences into the community and helping them to realise their potential will create a safer and fairer society for all.
- Every intervention should maximise opportunities for preventing and reducing offending as early as possible, before problems escalate.
- Community justice outcomes cannot be improved by one stakeholder alone. We must work in partnership to address these complex issues.
- Informed communities who participate in community justice will lead to more effective services and policies with greater legitimacy.
- High quality, person-centred and collaborative services should be available to address the needs of those who have committed offences, their families, and victims of crime.

National Strategy for Community Justice, (2016)

Inverclyde Alliance vision is “Getting it Right for Every Child, Citizen and Community: A Nurturing Inverclyde.” In applying this approach, the wellbeing outcomes are used as outlined below.

Safe	Protected from abuse, neglect or harm and supported when at risk. Enabled to understand and take responsibility for actions and choices. Having access to a safe environment to live and learn in.
Healthy	Achieve high standards of physical and mental health and equality of access to suitable health care and protection, while being supported and encouraged to make healthy and safe choices.
Achieving	Being supported and guided in lifelong learning. Having opportunities for the development of skills and knowledge to gain the highest standards of achievement in educational establishments, work, leisure or the community.
Nurtured	Having a nurturing place to live and learn, and the opportunity to build positive relationships within a supporting and supported community.
Active	Having opportunities to take part in activities and experiences in educational establishments and the community, which contribute to a healthy life, growth and development.
Respected & Responsible	Respected and share responsibilities. Citizens are involved in decision making and have an active role in improving the community.
Included	Overcoming social, educational, health and economic inequalities and being valued as part of the community.

Inverclyde Community Justice Partnership vision is “Improving Lives, Strengthening Communities”. This vision embraces the wellbeing outcomes and encapsulates the mutual dependence of supporting individuals while having a positive impact on communities and vice versa.

Our vision is underpinned by the values that:

- We will ensure our services are delivered in such a way that the dignity and respect of service users is preserved.
- We will promote social justice.
- We will respect and value uniqueness and diversity while recognising and building on the strengths of the individual.
- We will promote people’s right to choice, privacy, confidentiality and protection.
- We will assist people to improve the quality of and increase the control over their lives.

- We will operate in a manner that does not stigmatise or disadvantage individuals, groups or communities.
- We will promote equality of opportunity and access to services and not discriminate people or groups on grounds of protected characteristics of age; sex; sexual orientation; disability; religion or belief; race; marriage and civil partnership; pregnancy and maternity or gender reassignment.
- We will work in partnership with service users, their families and other providers of services, to ensure continuous improvement in the provision of services.

2.2 The Purpose and Scope of this Community Justice Outcomes Improvement Plan

The purpose of the Community Justice Outcomes Improvement Plan is to ensure the implementation of the new model of community justice in Inverclyde as detailed in The Community Justice (Scotland) Act 2016, National Strategy for Community Justice (2016), Community Justice Outcomes, Performance and Improvement Framework and related guidance by:

- Working together in planning for and delivering improved outcomes for community justice in Inverclyde.
- Actively involving the Third Sector, Community Based Organisations, communities, service users and their families and victims in community justice.
- Securing partners contribution towards resourcing community justice in order to achieve the outcomes identified in this Plan.
- Establish local partnership arrangements for the strategic planning and delivery of community justice in Inverclyde.
- Driving an improvement culture ensuring services are high quality and offering assurance of this.

While this is a five year plan, it will evolve over time and be revised as necessary. This is a reflection of community justice being a new national model where there are several key developments that will impact on community justice planning. These include:

- The extension of the presumption against short term sentences.
- The proposed intention of reducing the use of remand.
- The review of the Scottish Prison Service women's estate.
- The expansion of electronic monitoring.

All of these initiatives will potentially reduce the use of custody and increase the use of community alternatives.

More specific to progressing the community justice agenda will be the establishment of a new national body, Community Justice Scotland. The primary focus of this organisation will be in providing national leadership, developing an innovation and development hub and commissioning.

In addition to this, at a local level the Inverclyde Local Outcomes Improvement Plan will be developed towards the end of 2017. This will replace the existing Single Outcome Agreement. It will be important to ensure there is synergy between these local plans.

2.3 Cross Cutting Themes

Community Justice does not sit in isolation and there are several key cross-cutting themes where community justice can make a considerable contribution as illustrated in the diagram below. Appendix A details a broader range of legislation and policy frameworks that cross-cut with community justice.



3. Where Are We Now?

3.1 National Context

The Community Justice (Scotland) Act 2016 provides the statutory framework for implementation of the new model of community justice in Scotland. The Act formerly dis-establishes existing Community Justice Authorities on 31st March 2017, with local community justice partners having responsibility from 1st April 2017.

The statutory Community Justice Partners include:

- Local Authorities
- Health Boards
- Police Scotland
- Scottish Fire and Rescue Service
- Skills Development Scotland
- Integration Joint Boards
- Scottish Courts & Tribunal Service
- Scottish Ministers (Scottish Prison Service and Crown Office and Procurator Fiscal Service)

The definition of community justice is:

“The collection of individuals, agencies and services that work together to support, manage and supervise people who have committed offences, from the point of arrest, through prosecution, community disposal or custody and alternatives to these, until they are reintegrated into the community. Local communities and the Third Sector are a vital part of this process which aims to prevent and reduce further offending and the harm that it causes, to promote desistance, social inclusion, and citizenship.”

National Strategy for Community Justice, (2016)

There are seven common outcomes that consist of four structural outcomes and three person-centric outcomes. These are outlined in the diagram below. These form the basis of the Workplan section of this Plan.

Community Justice Outcomes

Communities improve their understanding and participate in community justice.

Partners plan and deliver services in a more strategic and collaborative way.

People have better access to the services they require, including welfare, health and wellbeing, housing and employability.

Effective interventions are delivered to prevent and reduce the risk of further offending.

Life chances are improved through needs, including health, welfare, housing and safety being addressed.

People develop positive relationships and more opportunities to participate and contribute through education, employment and leisure activities.

Individual's resilience and capacity for change and self-management are enhanced.



3.2 Local Context

Inverclyde is located in West Central Scotland covering 61 square miles stretching along the south bank of the estuary of the River Clyde.

Inverclyde is one of the smallest local authorities in Scotland with the main towns of Greenock, Port Glasgow and Gourock sitting on the Firth of the Clyde.

The towns provide a marked contrast to the small coastal settlements of Inverkip and Wemyss Bay, which lie to the South West of the area, and the picturesque rural villages of Kilmacolm and Quarrier's Village which are located further inland, offering a further dimension to the area's diversity.



A strong sense of community identity exists in Inverclyde and local residents are proud of the area and its history, which is steeped in centuries of maritime and industrial endeavour. There is also a strong community spirit and opportunity to further enhance this with the Community Justice agenda and the aim of building on local capacity to co-produce local responses.

Inverclyde is going through a period of transformation with improvements taking place in the physical infrastructure including further improvements in the existing well developed transport links to Glasgow and the rest of Scotland, new residential developments, leisure and retail facilities, cultural and arts centres and a new and refurbished schools estate being established that will help further renew and regenerate Inverclyde and more importantly, its communities. Inverclyde is also strengthened with West College Scotland situated over two local campuses. With regards to health facilities, Inverclyde is served with Inverclyde Royal Hospital and sixteen GP practices; HMP Greenock that includes both male and female prison population; Greenock Sheriff Court; Greenock Police Office (including the West of Scotland Custody Centre); three Community Fire Stations (including Greenock that incorporates the Marine Incident Response Group). These are all

considered as key assets within Inverclyde and in meeting the aspirations of how Community Justice is developed locally.

3.3 Demographic Profile

Population

According to the latest official statistics from the National Records of Scotland the estimated population of Inverclyde is 79,500 people. The breakdown of this figure into age groups and sex is shown in the table below. There are more women than men in every age group except for those aged 0-15. The percentage of the population in older age groups is higher in Inverclyde than in Scotland.

Age Band	Males	Females	Total
0-15	6,685	6,281	12,966
16-44	13,168	13,576	26,744
45-59	9,041	9,826	18,867
60-74	6,472	7,235	13,707
75+	2,688	4,528	7,216
Total	38,054	41,446	79,500

Source: Mid-year population estimates (2015), National Records of Scotland

The projected trend for the population of Inverclyde is to continue to shrink as illustrated in the table below. This will impact on the future needs of the local population in determining local service planning, resourcing and delivery of services.

Age Band	2012		2022		2032		2037	
	Number	%	Number	%	Number	%	Number	%
0-15	13,403	17%	12,295	16%	10,348	15%	9,171	14%
16-49	34,949	43%	27,579	37%	24,149	35%	22,152	34%
50-64	17,127	21%	17,745	24%	12,996	19%	11,597	18%
65-75	8,198	10%	9,263	12%	10,953	16%	10,202	16%
75+	7,003	9%	8,404	11%	10,464	15%	11,892	18%
Total	80,680	100%	75,286	100%	68,910	100%	65,014	100%

Source: Population Projection 2012 – 2037 (2015), National Records of Scotland,

Ethnicity

While the largest ethnic group in Inverclyde is 93.8% White Scottish (compared to 84% of Scotland population), over recent years there has been a small increase from other ethnic groups as outlined in the table below.

Ethnicity	%
White Scottish	93.8%
White Other British	3%
White Irish	0.9%
White Polish	0.1%
White Other	0.8%
Asian, Asian Scottish, Asian British	0.9%
Other Ethnic Group	0.4%

Source: Area Profile, Scotland's Census 2011

Religion

Historically, there were a high number of local churches and chapels that have played a significant role in local communities. While there has been a decline in these in recent years, they continue to play an active role in supporting local communities.

Religion	%
Church of Scotland	33%
Roman Catholic	37%
Other Christian	4.1%
Muslim	0.2%
Other Religions	0.5%
No Religion	19.2%
Not Stated	5.9%

Source: Area Profile, Scotland's Census 2011

Labour Market

Measure	Inverclyde	Scotland
Percentage of households with at least one person aged 16 to 74 who is unemployed (and not a full-time student) or long-term sick or disabled.	20.3%	14.6%
Economic activity - All persons aged 16 to 74	60,893	3,970,530
% Economically active	64.2%	69%
% Employees - part-time	13.8%	13.3%
% Employees - full-time	37%	39.6%
% Self-employed	5%	7.5%
% Unemployed	5.2%	4.8%
% Never worked	12%	13.9%
% Economically inactive	35.8%	31%
% Long-term sick or disabled	8.9%	5.1%
Most Dominant Industry		
Human health and social work activities	18.8%	15%
Wholesale and retail trade, repair of motor vehicles and motorcycles	15.5%	15%
Manufacturing	10.2%	8%
Most Dominant Occupation Grouping		
% Associate professional and technical occupations	12.9%	12.6%
% Elementary occupations	12.7%	11.6%

As outlined in the Skills Development Scotland (SDS) *Skills Assessment for Inverclyde, (2016)*, job losses following the economic downturn were delayed until 2011 in Inverclyde, when the area then experienced a sharp fall in the number of jobs. Since 2012, however, total employment has increased in Inverclyde by 6%, faster than the Scottish and GB growth rates. The health sector accounts for the largest proportion of jobs at 25%. Fewer Inverclyde residents in work are employed in professional occupations at 17%. The employment rate in Inverclyde in 2014 was 70%. This is 3% lower than for Scotland and GB. In 2014 / 2015 there were 2,900 ILO (International Labour Organisation definition of unemployment covers those of working age who are out of work, want to work and are actively seeking and available to start work), up from 2,600 in 2013 / 2014. The ILO rate in 2014 / 2015 was 8% in Inverclyde, compared to 6% in Scotland and GB.

In addition 24% of Inverclyde households were workless in 2013, compared to 20% in Scotland and 17% in GB. 42% of those at school in Inverclyde are entitled to free school meals, above the national average of 39%.

The on-going welfare reforms are continuing to have a detrimental impact on the lives of people in Inverclyde. The latest update from *Sheffield Hallam University (March, 2016)* highlights:

- Increase in non-dependent deductions, Inverclyde is in the UK 20 worst affected local authorities and 3rd highest in Scotland;
- Introduction of Personal Independent Payments (PIP), Inverclyde is the UK 20 worst affected local authorities and 3rd highest in Scotland;
- Current Employment Support Allowance (ESA) reforms, Inverclyde is in the UK 20 worst affected local authorities and 3rd highest in Scotland;
- ESA new reforms, Inverclyde is the UK 20 worst affected local authorities and 5th highest in Scotland.

The links between poverty and health are well documented and for many years Inverclyde has been characterised by some notably unequal health and socio-economic outcomes. The causes of inequality are well-evidenced in terms of economic and work-related opportunities; levels of education; access to services and societal or cultural norms. Health inequalities are therefore inextricably linked to the unequal distribution of a range of opportunities.

There is a significant gap between our more affluent areas and those which experience high levels of poverty and deprivation. In our most deprived and disadvantaged areas, people face multiple problems such as ill-health; high levels of worklessness; poor educational achievement/attainment; low levels of confidence and low aspirations; low income; poor housing and an increased fear of crime. In addition, Inverclyde has particular issues relating to alcohol.

Alcohol misuse is a particular problem in Inverclyde, particularly amongst the more disadvantaged population, where deaths and hospital admissions related to alcohol misuse are more than double the national average. In a Citizens' Panel survey carried out in autumn 2015, 60% of respondents take the view that alcohol in their neighbourhood is either a major (27%) or minor issue (33%). These figures were slightly higher for the most deprived datazones.

The estimated number of individuals with problem drug use and the corresponding prevalence rates for 2012 / 2013 indicates the council areas with the highest prevalence rates of problem drug use in Scotland are Inverclyde 3.20%, Dundee City 2.80% and Glasgow City 2.76% - For Scotland as a whole the figure is 1.68%. (Percent of populations aged 15-64). *Inverclyde ADP Strategic Plan 2014-2015*

From the Autumn Citizen's Panel in 2015 30% of respondents indicated drug misuse was a major issue in their neighbourhood and this increased to 41% in most deprived datazones. Of note is that 30% of respondents also specified that crime is an issue arising from drug misuse compared to 11% indicating an increase of violence and crime arising in their neighbourhood due to overconsumption of alcohol.

In addition, a significant number of Inverclyde residents presenting at emergency homeless services have alcohol and drug problems.

All of these conditions impact on community justice and highlight the multi-layered and complex nature of issues facing our community.

Scottish Index of Multiple Deprivation (SIMD) 2016

In the context of the SIMD, deprivation is defined more widely as the range of problems that arise due to lack of resources or opportunities, covering health, safety, education, employment, housing and access to services, as well as financial aspects. The SIMD uses data relating to multiple aspects of life in order to gain the fullest possible picture of deprivation across Scotland. Seven different domains are identified and data from these domains are combined to produce the index. The domains are made up of 38 indicators.

It is important to remember that the SIMD identifies deprived *areas* not individuals, so not everyone living in a deprived area is deprived, and not all deprived people live in deprived areas. Two out of three people who are income deprived do not live in deprived areas. Just fewer than one in three people living in a deprived area are income deprived.

For the purposes of the SIMD 2016, Inverclyde is split into 114 datazones. 44% of these datazones are amongst the most deprived 20%, while 13% are amongst the 21-40% most deprived. This compares to 48% of datazones in Glasgow City amongst the 20% most deprived and 17% amongst the 21-40%.

The table below shows the changes in the national and local share between SIMD 2009, SIMD 2012 and 2016. These figures are not directly comparable from 2012 to 2016, as there are 471 new datazones across Scotland and 4 locally.

SIMD Domain	National Share (%) of 15% Most Deprived Datazones			Local Share (%) of 15% Most Deprived Datazones		
	2016	2012	2009	2016	2012	2009
All Domains	3.9%	4.5%	4.3%	36%	40%	38.2%
Income	3.7%	4%	4.1%	34.2%	35.5%	36.4%
Employment	3.7%	4.3%	4.3%	34.2%	38.2%	38.2%
Health	4%	4.8%	4.7%	36.8%	42.7%	41.8%
Education	2.6%	2.6%	2.4%	23.7%	22.7%	20.9%
Housing	1.9%	2%	-	17.5%	18.2%	-
Access	1%	1.4%	3.9%	9.6%	12.7%	34.5%
Crime	2.7%	2.7%	2	24.6%	23.6%	18.2%

Recorded Crime and Offences

Classification of Crimes and Offences

Table 1: Crimes

Group 1 Non-Sexual Crimes of Violence	Group 2 Crimes of Indecency	Group 3 Crimes of dishonesty	Group 4 Fire-Raising, Vandalism etc	Group 5 Other crimes
Homicide etc	Rape & Attempted Rape	Housebreaking	Fire-raising	Crimes against public justice
Attempted Murder and serious assault	Sexual Assault	Theft by opening a lockfast place (OLP)	Vandalism etc	Handling an offensive weapon
Robbery	Crimes Associated with Prostitution	Theft from a motor vehicle by OLP		Drugs
Other	Other	Theft of a motor vehicle		Other

Positive Lives, Strengthening Communities

		Shoplifting		
		Other theft		
		Fraud		
		Other Dishonesty		

Table 2: Offences

Group 6: Miscellaneous offences	Group 7: Motor vehicle offences
Common assault	Dangerous and careless driving
Breach of the peace etc.	Driving under the influence
Drunkenness and other disorderly conduct	Speeding
Urinating etc.	Unlawful use of vehicle
Other	Vehicle defect offences
	Seat belt offences
	Mobile phone offences
	Other

Source: Recorded Crime in Scotland 2015-2016

Recorded Crime Comparisons 2015-2016

Table 3: Number of crimes by category recorded by the police

	Non-Sexual Crimes of Violence	Sexual Crimes	Crimes of Dishonesty	Fire-Raising, Vandalism, etc.	Other Crimes	Total Crimes
Inverclyde	163	98	1414	947	1436	4058

Source: Recorded Crime in Scotland 2015-2016

Table 4: Number of offences by category recorded by the police

	Miscellaneous Offences	Motor Vehicle Offences	Total Offences
Inverclyde	2263	1664	3927

Source: Recorded Crime in Scotland 2015-2016

Table 5: Percentage of crimes cleared up by the police

	Non-Sexual Crimes of Violence	Sexual Crimes	Crimes of Dishonesty	Fire-Raising, Vandalism, etc.	Other Crimes	Total Crimes
Inverclyde	72.4%	68.4%	38.8%	12.1%	95.2%	54.6%
Scotland	82.3%	74.1%	38.0%	24.3%	96.0%	51.6%

Source: Recorded Crime in Scotland 2015-2016

Table 6: Number of Crimes Recorded by the Police per 10,000 Population

Local authority area	Non-sexual crimes of violence	Sexual crimes	Crimes of dishonesty	Fire-raising, vandalism, etc.	Other crimes	Total crimes
Inverclyde	21	12	178	119	181	510
SCOTLAND	13	19	216	101	110	458

Source: Recorded Crime in Scotland 2015-2016

Table 7: Number of Offences Recorded by the Police per 10,000 Population

Local authority area	Miscellaneous offences	Motor vehicle offences	Total offences	Total crimes and offences
Inverclyde	285	209	494	1,004
SCOTLAND	314	317	631	1,090

Source: Recorded Crime in Scotland 2015-2016

Compared to 2014-2015 (4340 crimes) to 2015-2016 (4058 crimes) there has been a 6% fall in total crimes. There has been a 30% increase in non-sexual crimes of violence (from 125 to 163); a 32% increase in sexual crimes (from 74 to 98); however there has also been an 11% fall in crimes of dishonesty (from 1583 to 1414) and a 4% fall in fire-raising and vandalism etc. (from 984 to 947) as well as a 9% fall in other crimes (from 1574 to 1436). During the same period there has also been a reduction of 20% in the number of offences committed (from 4924 to 3927 offences).

Domestic Abuse

The definition of domestic abuse used by Police Scotland is:

“Any form of physical, sexual or mental and emotional abuse [that] might amount to criminal conduct and which takes place within the context of a relationship. The relationship will be between partners (married, cohabiting, civil partnership or otherwise) or ex-partners. The abuse can be committed in the home or elsewhere”.

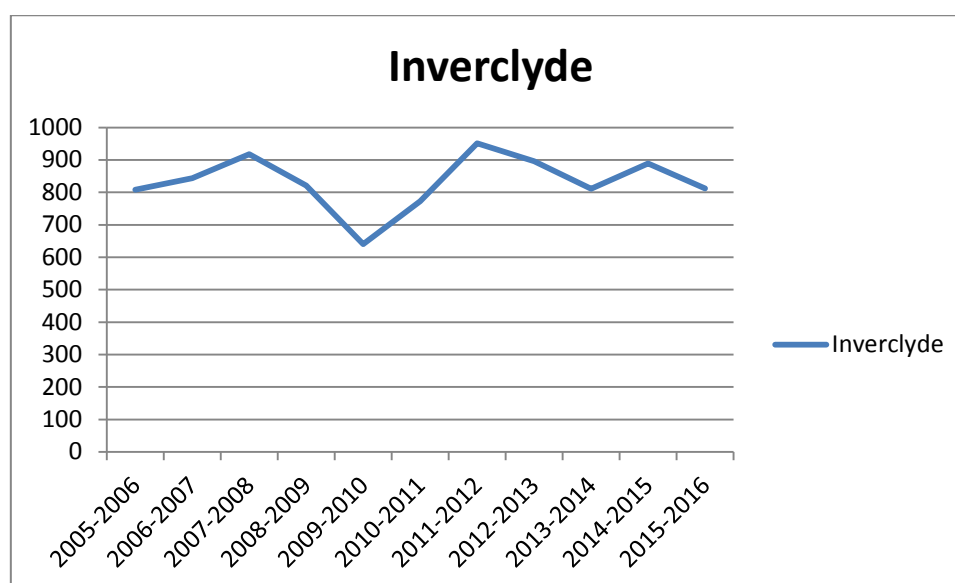
Source: Statistical Bulletin – Criminal Justice Series. Domestic Abuse Recorded by the Police in Scotland 2015 / 2016

Table 8: Domestic Abuse recorded by the police

Local Authority	2013-2014		2014-2015		2015-2016	
	No of Incidents	Rate per 10,000	No of Incidents	Rate per 10,000	No of Incidents	Rate per 10,000
Inverclyde	811	101	889	111	812	102
Scotland	58,439	110	59,882	112	58,104	108

Source: Statistical Bulletin – Criminal Justice Series. Domestic Abuse Recorded by the Police in Scotland 2015 / 2016

Graph 1: Incidents of Domestic Abuse Recorded by the Police 2005-2006 to 2015-2016



Source: Statistical Bulletin – Criminal Justice Series. Domestic Abuse Recorded by the Police in Scotland 2015 / 2016

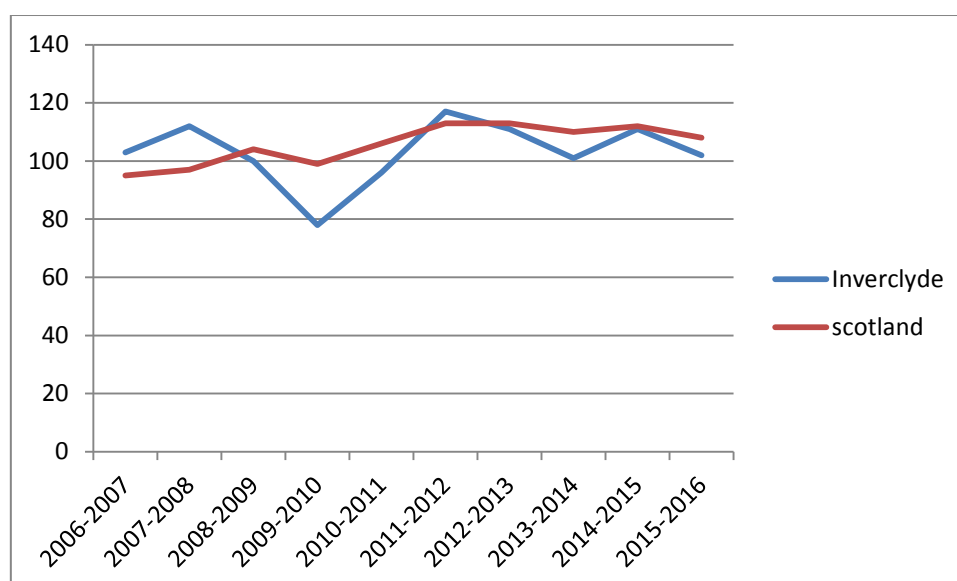
In 2014 / 2015 there were 59,882 incidents of domestic abuse recorded by the police in Scotland. In 2015 / 2016 there were 58,104 incidents of domestic abuse recorded by the Police in Scotland, a decrease of 2.97% from 2014 / 2015. This decrease is also reflected in Inverclyde during this period where incidents of domestic abuse fell by 8.66% (77). While there is a degree of fluctuation in the number of incidents year on year; in comparison to the national picture, Inverclyde remains very similar to the national trend pattern.

Table 9: Incidents of domestic abuse recorded by the police and whether they resulted in a crime or offence 2015-2016

	Number of Incidents	% of incidents leading to a crime or offence	% of incidents not leading to a crime or offence
Inverclyde	812	48%	52%
Scotland	58,104	51%	49%

The graph below outlines the rate of incidents of domestic abuse recorded by the police per 10,000 population in Inverclyde and compares this to the Scottish figure.

Graph 2: Rate of Incidents of Domestic Abuse Recorded by the Police per 10,000 Population (Inverclyde and Scotland)



Source: Statistical Bulletin – Criminal Justice Series. Domestic Abuse Recorded by the Police in Scotland 2015 / 2016

Incidents of domestic abuse recorded by the Police are more common at weekends with 36% of all incidents in 2015 / 2016 occurring on a Saturday or Sunday. The remaining 64% is spread fairly evenly from Monday to Friday. This pattern has been consistent over the past ten years.

Reconviction Rates

There are key messages about reconviction rates detailed in *Reconviction Rates in Scotland: 2013-2014 Offender Cohort, (2016)*, Scottish Government and generally Inverclyde reflects the national picture.

- In 2013-2014 28% of offenders were reconvicted within one year of serving their sentence.
- Men are more likely to reoffend than women.
- Reconvictions are the lowest for seventeen years.
- While there has been a fall in youth reoffending; there has been an increase in those over 30 years of age.
- Of those released from a custodial sentence of six months or less; 57% are reconvicted within a year and 38% are back in prison within a year.
- Community sentences offer better opportunities to address the underlying causes of offending, whereas short prison sentences provide limited access to rehabilitative services addressing drugs, alcohol and mental health issues.
- Evidence also suggests that imprisonment may in fact increase long-term offending by weakening social bonds and decreasing job stability (Sapouna, M. et al (2015) *What Works to Reduce Reoffending: A Summary of the Evidence*).

The following tables provide an outline of local reconviction rate information and compare this to the Scottish figures. These statistics are derived from the Criminal Proceedings in Scotland data.

Table 10: Overall reconviction rate

Local Authority	Number of offenders	Reconviction rate	Average number of reconvictions per offender
Inverclyde	704	29	0.48
Scotland	42193	28.3	0.51

Reconviction rates in Scotland: 2013-2014 Offender Cohort

Table 11: Reconviction Rate by Gender

Gender	Local Authority	Number of offenders	Number of offenders reconvicted	Reconviction Rate	Number of reconvictions	Average number of reconvictions per offender
Male all ages	Inverclyde	579	180	31.1	301	0.52
	Scotland	35,005	10,295	29.4	18,476	0.53
Female all ages	Inverclyde	125	24	19.2	36	0.29
	Scotland	7,188	1,644	22.9	3,094	0.43

Reconviction rates in Scotland: 2013-2014 Offender Cohort

Table 12: Reconviction Rate by Age

Age	Local Authority	Number of offenders	Number of offenders reconvicted	Reconviction Rate	Number of reconvictions	Average number of reconvictions per offender
Under 21	Inverclyde	80	30	37.5	62	0.78
	Scotland	5391	1836	34.1	3262	0.61
21-25 years	Inverclyde	124	35	28.2	47	0.38
	Scotland	8292	2430	29.3	4111	0.50
26-30 years	Inverclyde	114	36	31.6	52	0.46
	Scotland	7219	2235	31.0	4064	0.56
31-40 years	Inverclyde	190	68	35.8	122	0.64
	Scotland	11037	3332	30.2	6311	0.57
Over 40 years	Inverclyde	196	35	17.9	54	0.28
	Scotland	10254	2106	20.5	3822	0.37

Reconviction rates in Scotland: 2013-2014 Offender Cohort

The reconviction rate for Under 21s years of age is 3.4 points higher in Inverclyde than Scotland. This pattern is also reflected in the 31-40 years of age group with the Inverclyde reconviction rate being 5.6 points higher than Scotland.

Table 13: Reconviction Rate by Type of Crime

Type of Crime	Local Authority	Number of offenders	Number of offenders reconvicted	Reconviction Rate	Number of reconviction	Average number of reconviction per offender
Violent Crime	Inverclyde	167	29	17.4	46	0.28
	Scotland	11221	2495	22.2	3948	0.35
Sexual Crime	Inverclyde	10	1	-	2	-
	Scotland	709	73	10.3	109	0.15
Dishonest	Inverclyde	132	54	40.9	95	0.72
	Scotland	7815	3231	41.3	7313	0.94
Damage	Inverclyde	25	12	48.0	21	0.84
	Scotland	1928	604	31.3	1056	0.55
Drug Crime	Inverclyde	152	54	35.5	91	0.60
	Scotland	5590	1226	21.9	1847	0.33
Breach of Peace	Inverclyde	161	39	24.2	59	0.37
	Scotland	10966	3077	28.1	5217	0.48
Other	Inverclyde	57	15	26.3	23	0.40
	Scotland	3964	1233	31.1	2080	0.52

Reconviction rates in Scotland: 2013-2014 Offender Cohort

Inverclyde has a higher reconviction rate by 16.6 points for the reconviction rate related to damage type of crimes than the reconviction rate for Scotland.

Table 14: Reconviction Rate by Disposal Type

Disposal Type	Local Authority	Number of offenders	Number of offenders reconvicted	Reconviction Rate	Number of reconviction	Average number of reconviction per offender
Custody	Inverclyde	126	58	46.0	101	0.80
	Scotland	7108	3110	43.8	5997	0.84
CPO	Inverclyde	126	33	26.2	53	0.42
	Scotland	10551	3203	30.4	5778	0.55
PO	Inverclyde	1	0	-	0	-
	Scotland	72	5	6.9	6	-
RLO	Inverclyde	3	1	-	6	-
	Scotland	643	225	35.0	377	0.59
DTTO	Inverclyde	3	1	-	1	-
	Scotland	328	206	62.8	546	1.66
Monetary	Inverclyde	244	63	25.8	108	0.44
	Scotland	14829	3418	23.0	5635	0.38
Other	Inverclyde	201	48	23.9	68	0.34
	Scotland	8532	1765	20.7	3223	0.38

Reconviction rates in Scotland: 2013-2014 Offender Cohort

In Inverclyde the reconviction rate of custody compared to a Community Payback Order is 19.8 points more.

Level of Service / Case Management Inventory (LSCMI)

The Level of Service / Case Management Inventory is a comprehensive general offending risk / need assessment and case management planning method. This approach is used in Scotland to aid decisions on the level and focus of intervention with people aged 16+ years. It is a tiered approach that involves an initial assessment, a detailed examination of risk and needs and a scrutiny of risk of serious harm indicators and risk management plan.

The information in the diagram below has been extracted from the report "Level of Service / Case management Inventory in Practice: Inverclyde Criminal Justice Social Work (2013). The demographic information relates to all assessments, whilst the needs and risks profile relate to full assessments which are carried out once a Court Order is made.

LS/CMI Information (2013)

Age

- 3% were 17-17 years of age.
- 20% were 18-21 years of age.
- 14% were 22-25 years of age.
- 16% were 26-30 years of age.
- 46% were over 30 years of age.

Other Issues

- 34% had financial problems.
- 27% were a victim of physical assault.
- 24% showed evidence of emotional distress.
- 20% had accommodation issues.
- 18% had a mental disorder.
- 50% had problem solving deficits.
- 34% anger management was an issue.

Anti-Social Pattern

- 67% of cases had an official record of violence / assault.
- Physical assault is most commonly perpetrated against extra familial males and there is a noticeable recording of the use of a knife.

Criminal History

- 79% of individuals had two or more episodes of offending.
- 25% had been arrested or charged under aged 16.
- 42% breached the requirements of prior community supervision.



Companions

- 72% had some criminal acquaintances.
- 40% had few anti-criminal acquaintances.

Pro-Criminal Attitude

- 32% have an unsatisfactory attitude toward being supportive of crime.
- 20% indicated as having a poor attitude toward their sentence.

Family / Marital

- 33% have criminal family / spouse relationships.
- 22% have an unsatisfactory marital or equivalent situation.
- 21% have unsatisfactory parental relationships.

Gender

- 85% Male
- 12% Female

Education / Employment

- 76% were currently unemployed.
- 63% left school at minimum leaving age.

Leisure / Recreation

- 64% had an absence of organised activity.
- 54% indicated a better use of time was warranted.

Alcohol / Drug Problem

- 58% had an alcohol problem at some point.
- 24% recorded a current alcohol problem.
- 57% had a drug problem at some point.
- 31% indicated a current drug problem.

Where a current substance problem was identified:

- 99% involved law violation.
- 75% the problem had affected the marital / family situation.
- 62% education / work had been affected.

Victims and Witnesses

Victim Support has provided the following information extracted from their new information system. The first table outlines feedback from victims and witnesses and how they feel after receiving support from Victim Support, focusing on outcomes.

Office	Improved Health and Wellbeing	Feeling Informed	Increased Safety Perception	Re-Integration	Other
VS Inverclyde	12	623	3	0	229
WS Greenock	88	31	0	0	11

The following gives a breakdown of the types of crime that Victim Support Inverclyde receives referrals for:

Crime Type	Number 2014 / 2015	Number 2015 / 2016
Dishonesty	449	424
Indecency	46	14
Violence	346	382
Vandalism / Fire-raising	337	342
Other	231	242
Total	1409	1404

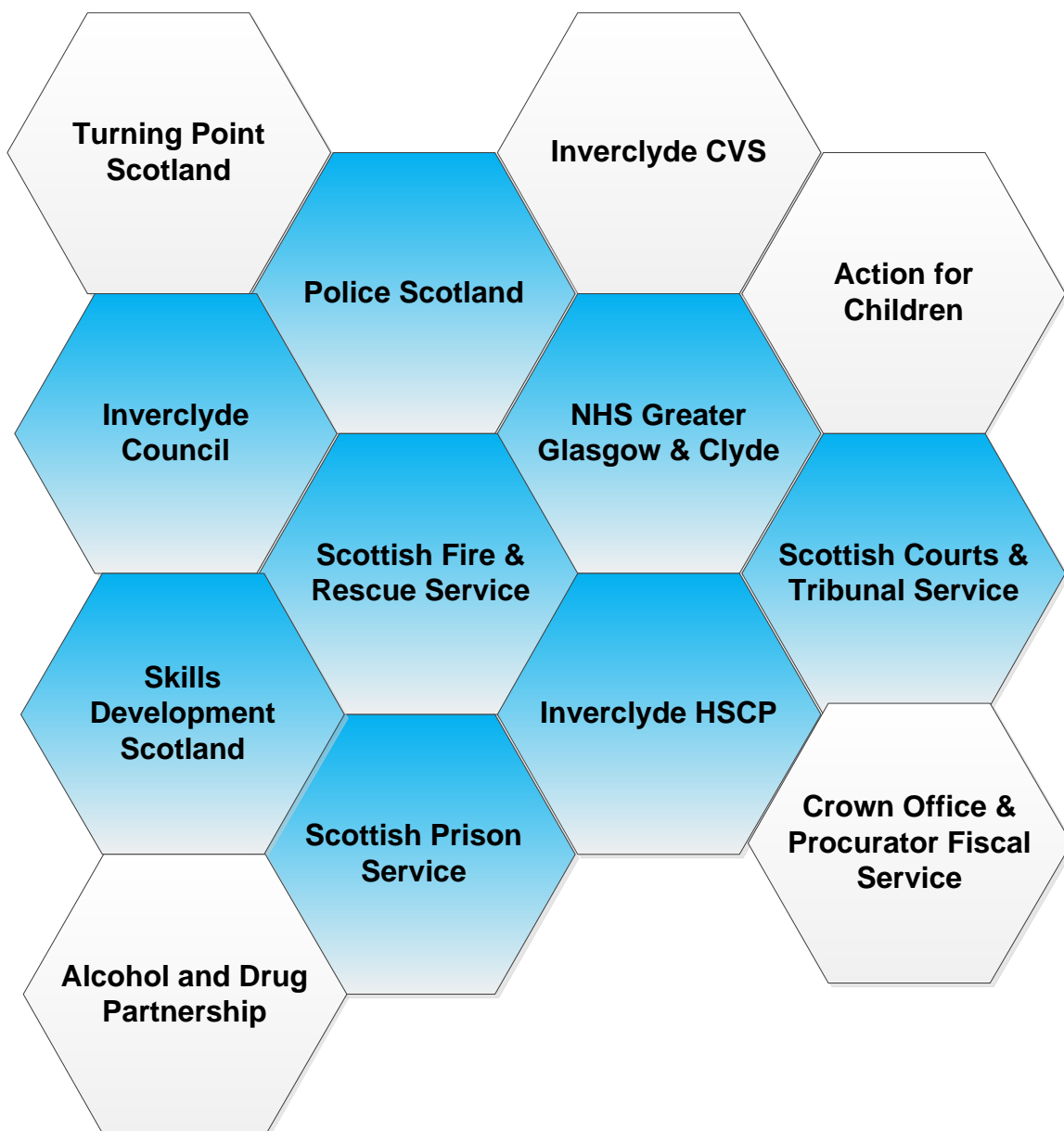
The table below outlines the age range and gender of victims.

Age Range	Male		Female		Total	
	2014 / 2015	2015 / 2016	2014 / 2015	2015 / 2016	2014 / 2015	2015 / 2016
0-12	9	6	3	6	12	12
13-15	22	29	15	9	37	38
16-17	18	21	22	14	40	35
18-64	634	966	522	710	1156	1676
64+	110	121	81	91	191	212
Total	793	1143	643	830	1436	1973

3.4 Inverclyde Community Justice Partnership

An Inverclyde Community Justice Transition Group was formed in October 2015 to ensure a smooth period of transition during the shadow arrangements. This will become the Inverclyde Community Justice Partnership as from 1st April 2017.

It includes involvement of all of the statutory partners and representation from Action for Children and Turning Point Scotland who both deliver local services; CVS Inverclyde (who form one part of Inverclyde's Third Sector Interface; the local Community Safety and Wellbeing Manager, Corporate Policy and Partnership Manager and ADP Co-ordinator.



Other Third Sector organisations and stakeholder organisations will have involvement in the planning and delivering of community justice, while not being directly represented on the Inverclyde Community Justice Partnership.

The governance structure for the partnership is that it reports to Inverclyde Single Outcome Programme Board followed by Inverclyde Alliance (the Community Planning Partnership). This may change following the introduction of the Local Outcome Improvement Plan towards the end of 2017.

The partnership has agreed a Terms of Reference (see Appendix B) and a Memorandum of Understanding.

Inverclyde Criminal Justice Social Work hosts the Inverclyde Community Justice Lead Officer. As such, is based in the Health and Social Care Partnership. This extends the governance arrangements to the Integrated Joint Board, Health and Social Care Committee and HSCP Strategic Planning Group. The Chair of the partnership is the Head of Service for Children's Services and Criminal Justice Social Work.

Each community justice partner will also have their own respective governance arrangements for reporting on community justice.

4.0 Where Do We Want To Be?

The Community Justice Partnership has agreed to develop a “Portfolio Leads” approach whereby there is a partner who will lead on each of the structural outcomes. These will all cross-cut with the three person-centric outcomes and will be evidenced through our quality assurance framework.

The remit of a Portfolio Lead is to provide strategic leadership to progress and deliver on the respective actions of their portfolio detailed in the Community Justice Outcomes Improvement Plan. They will also provide updates to the Community Justice Partnership and governance bodies.

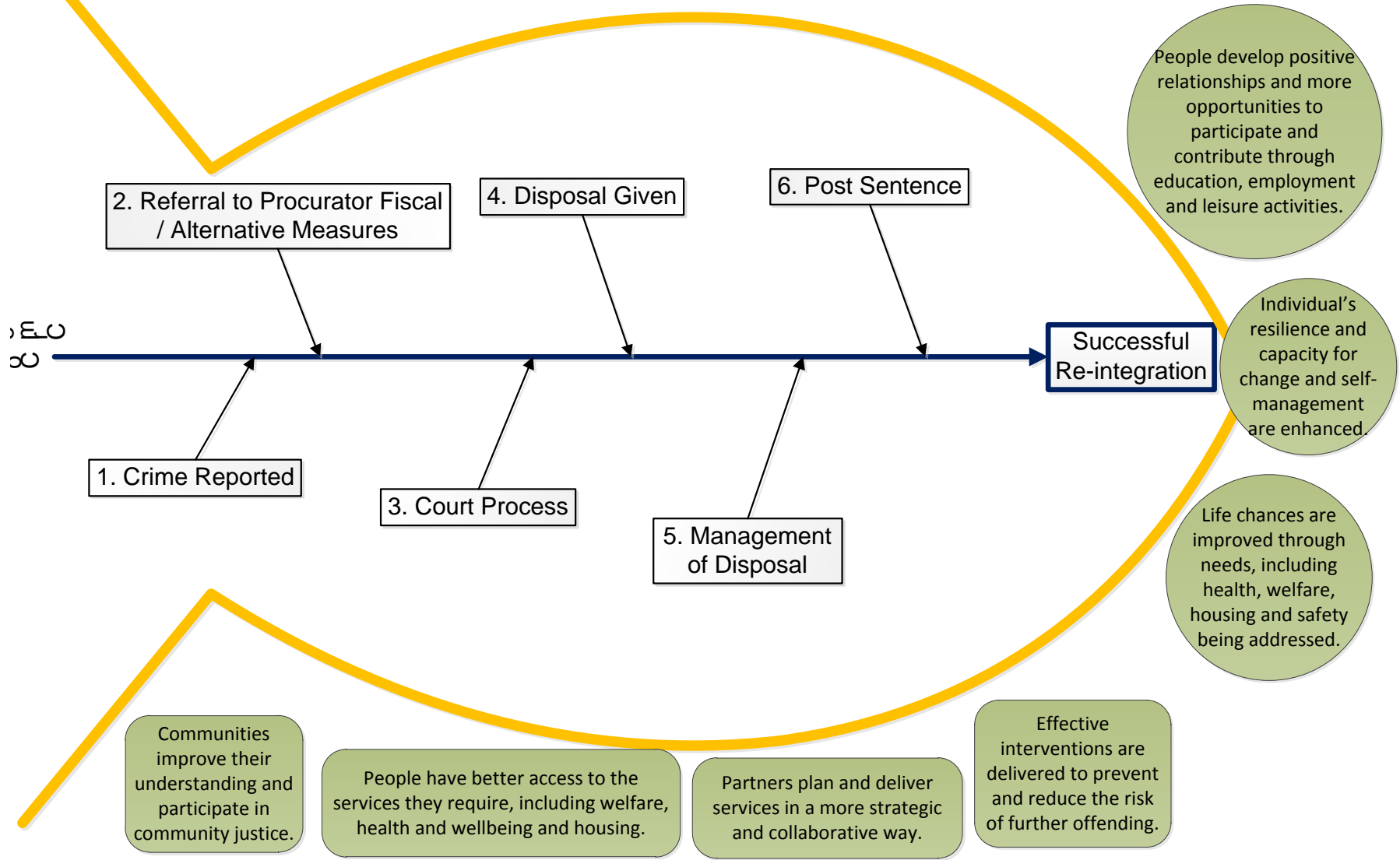
4.1 Outcomes We Want To Achieve

Besides the common outcomes as outlined in the national Community Justice Strategy; the Inverclyde Community Justice Partnership has also agreed several key local outcomes as outlined in the Workplan.

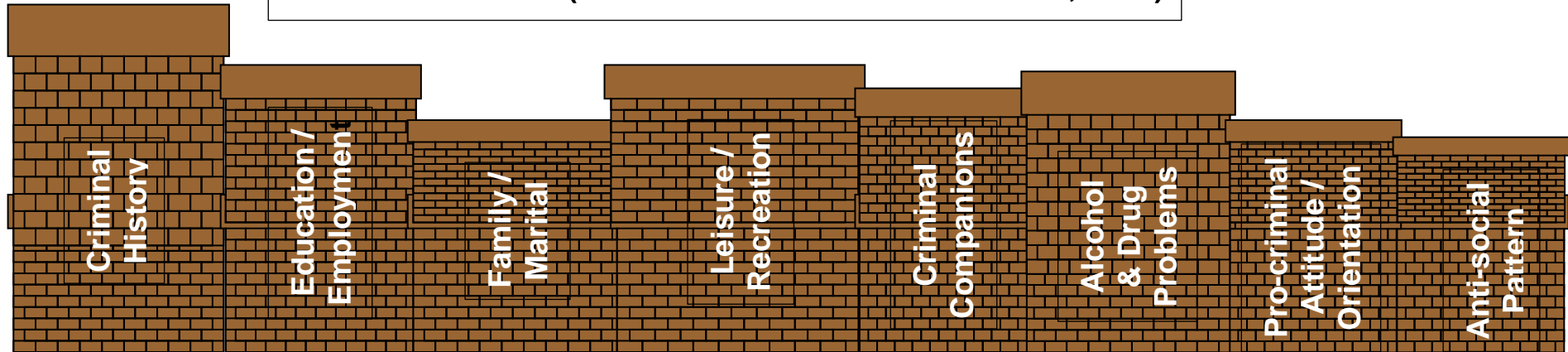
To assist in developing these, consideration was given to understanding the full community justice pathway as illustrated in the diagram below. Each of the six stages are transition points where there are opportunities to demonstrate the structural outcomes so that ultimately the person-centric outcomes are met for each individual and no-one is “lost in the system”.

The “Wall of Recidivism” diagram below outlines the “wall” of various complexities that people face and struggle to overcome. Incorporated into this diagram are the three levels of interventions. Traditionally there has been an emphasis given to the more targeted and intensive range of interventions. Community justice provides an opportunity to re-address the balance of interventions to ensure universal and community supports are fully explored in the first instance. This will ensure an earlier focus on re-integrating into their own community at an early stage as possible, while also ensuring people are not “maintained” in the criminal justice system so as to access services.

Community Justice Pathway



Wall of Recidivism (Extracted from LS/CMI Handbook, 2006)



Level of Interventions

Custody / Criminal Justice Intervention



Tier 3:
Intensive

Specialist Service (Health, Addiction etc.) and criminal justice diversionary measures.

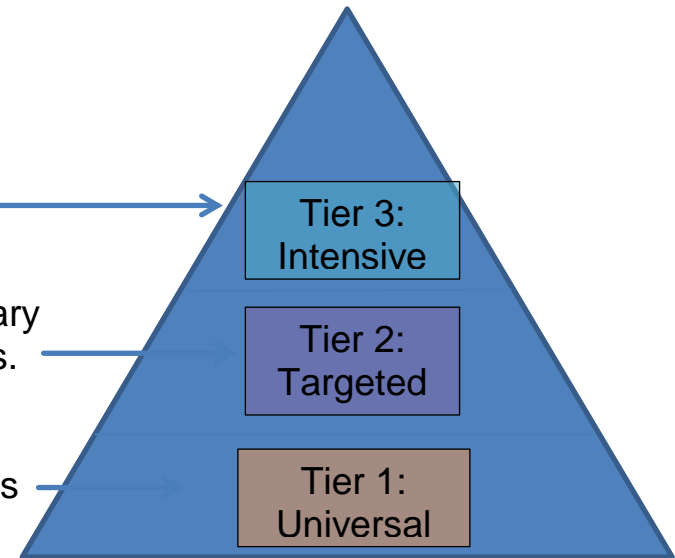


Tier 2:
Targeted

Generic service, including community supports



Tier 1:
Universal



5.0 How Will We Get There

5.1 Participation Statement

We recognise the importance of ensuring all stakeholders have a voice in taking community justice forward in Inverclyde. As such, one of the first tasks undertaken by the Inverclyde Community Justice Partnership was to develop a Communication and Engagement Strategy. This reflects the principles outlined in the Inverclyde Alliance Community Engagement Strategy and incorporates the revised National Standards for Community Engagement (2016) as detailed below:

- **Inclusion** – We will identify and involve people and organisations that are affected by the focus of the engagement.
- **Support** – We will identify and overcome any barriers to participation.
- **Planning** – There is a clear purpose for the engagement, which is based on a shared understanding of community needs and ambitions.
- **Working Together** – We will work effectively together to achieve the aims of the engagement.
- **Methods** – We will use methods of engagement that are fit for purpose.
- **Communication** – We will communicate clearly and regularly with the people, organisations and communities affected by the engagement.
- **Impact** – We will assess the impact of the engagement and use what we have learned to improve our future community engagement.

Consultation on this draft Plan has been taking place as part of the shadow arrangements during 2015 / 2016 and in accordance with requirements of the Community Justice (Scotland) Act 2016 and the related Guidance. While this is the initial phase of consultation, it builds on current on-going dialogue with stakeholder groups.

All responses received during this consultation will be reviewed and taken into consideration in the production of the final Plan.

In addition, key actions of this Plan are to develop a Communication and Engagement Plan and a Participation Strategy.

The table below outlines a range of activities.

Stakeholders	Activities	Dates
Statutory Partners	The Inverclyde Community Justice Transition Group was formed on 13 th October 2015 and has representation / points of contact from all community justice statutory partners.	13.10.15 26.11.15 06.01.16 18.02.16 23.06.16 05.08.16
	In addition, the Community Justice Lead Officer has met with each partner.	12.10.16 19.01.17 16.03.17
	In addition to regular meetings, the Community Justice Transition Group also had two Development sessions. The focus of these was specifically on the development of this Plan.	28.04.16 05.09.16
Public Sector	The Community Justice Lead Officer has met with a variety of local public sector partners including: Community Safety Violence Against Women Co-ordinator Alcohol and Drug Partnership Co-ordinator Child Protection Co-ordinator Adult Protection Co-ordinator DWP Inverclyde Leisure West College Economic Development Children's Rights Officer Community Learning and Development Clinical Director	On-going

	Advice Services	
Reporting	<p>Regular reports have been provided to a range of meetings as part of our governance arrangements. These include:</p> <p>Corporate Management Team</p> <p>SOA Programme Board</p> <p>SOA Programme Board</p> <p>SOA Programme Board</p> <p>SOA Programme Board</p> <p>Inverclyde Alliance Board</p> <p>Inverclyde Alliance Board</p> <p>Inverclyde Alliance Board</p> <p>Inverclyde Alliance Board</p> <p>Health & Social Care Committee</p> <p>Health & Social Care Committee</p> <p>Health & Social Care Committee</p> <p>Health & Social Care Committee</p> <p>Inverclyde Integration Joint Board</p> <p>Inverclyde Integration Joint Board</p> <p>Inverclyde Integration Joint Board</p> <p>Inverclyde Integration Joint Board</p> <p>HSCP Transformation Board</p> <p>HSCP Transformation Board</p> <p>HSCP Transformation Board</p> <p>HSCP Strategic Planning Group</p> <p>In addition to these meetings, Community Justice has also been discussed at various partnership meetings including the:</p> <p>Alcohol Drug Partnership,</p> <p>Integrated Women Offenders Strategic Group,</p> <p>Housing Partnership and</p> <p>Registered Social Landlord Liaison Group</p> <p>Community Engagement and</p> <p>Communication Benchmarking Network</p> <p>Adult Literacy Group</p> <p>Offender and Prison Health Improvement Group</p> <p>HSCP Communication Group</p> <p>HSCP Extended Management Group</p> <p>Violence Against Women Multi-Agency</p>	<p>05.11.15</p> <p>06.11.15</p> <p>19.08.16</p> <p>04.11.16</p> <p>10.02.17</p> <p>14.12.15</p> <p>21.03.16</p> <p>03.10.16</p> <p>20.03.17</p> <p>07.01.16</p> <p>25.02.16</p> <p>20.10.16</p> <p>23.02.17</p> <p>26.01.16</p> <p>15.03.16</p> <p>18.08.16</p> <p>08.11.16</p> <p>14.03.17</p> <p>15.04.16</p> <p>16.05.16</p> <p>15.08.16</p> <p>25.10.16</p>

	Partnership	
Workforce	<p>HSCP Staff Briefing</p> <p>HSCP Staff Briefing</p> <p>A briefing and presentation was also made available to Community Justice partners to cascade through their own respective organisation.</p> <p>Market Street event for HSCP staff</p> <p>Criminal Justice Social Work Team Meeting</p> <p>Criminal Justice Social Work Team Meeting</p>	<p>January 2016</p> <p>October 2016</p> <p>28.10.15</p> <p>20.11.15</p> <p>19.10.16</p>
Third Sector	<p>There is strong Third Sector involvement in the Community Justice Partnership including representation of Action for Children and Turning Point. The local Third Sector Interface is also represented via CVS Scotland. In going forward they will be the Portfolio Lead for one of the common outcomes.</p> <p>The Community Justice Lead Officer has started meeting with various Third Sector organisations including:</p> <p>Action for Children, Turning Point, Faith in Throughcare, WEvolution, Trust Volunteering Inverclyde, SAMH, Your Voice, Victim Support Tomorrow's Women SHINE New Routes Carers Centre</p>	On-going
Public Engagement	<p>Community Justice Communication displayed in 23 locations across Inverclyde via Solus Screens.</p> <p>Doors Open Day Events where there were</p>	<p>May-June 2016</p> <p>10.09.16</p>

	<p>a Community Justice Information Stall</p> <p>CVS Annual Conference where a workshop was delivered on Community Justice</p> <p>Your Voice engaged with a range of community groups on Community Justice.</p> <p>Citizen's Panel</p>	<p>14.19.16</p> <p>September 2016</p> <p>November 2016</p>
Victims and Witnesses	<p>Engagement and local information received from Victim Support.</p> <p>Other organisations will be contacted as part of on-going consultation and engagement including Women's Aid, Family Support Group, Families Outside and via local Children's Rights engagement.</p>	On-going
Service Users	<p>The Community Justice Lead Officer has met with both male and female service users via the following services:</p> <p>People serving a custodial life sentence</p> <p>People serving a custodial short term sentence</p> <p>People on remand</p> <p>People on an Unpaid Work Order</p> <p>People attending a Constructs Group</p> <p>Integrated Women's Service</p> <p>People having recently completed an order</p> <p>The Community Justice Partnership has developed an information and consent leaflet to be given to people involved in the criminal justice system during the exit planning stage as part of a feedback mechanism that will focus on the whole community justice pathway.</p>	On-going

5.2 Our Workplan

Common Outcome 1: Communities improve their understanding and participation in community justice.

Why is this outcome important?

Communities themselves have a key role in ensuring the success of community justice and as outlined in the Christie Commission, the way to address negative outcomes experienced by people living in the most deprived communities is to build capacity of the people living in these communities. There are a range of people living in communities that will have a role in community justice including:

- People who have committed offences;
- Victims and witnesses of crime;
- Families of both those who have committed offences and of victims and witnesses;
- People who live in communities;
- Local businesses;
- Community assets and organisations.

It is fundamental that Community Justice Partners have an understanding of the lived experience of people living in our communities, as well as improving the understanding of communities about community justice. Community engagement follows on from community capacity building, where communities are more able to engage with Community Justice Partners to help develop services that better meet their needs in their local area.

With a view to simplifying the planning structure in line with various locality planning drivers and the Community Empowerment (Scotland) Act 2015; it was agreed at Inverclyde Alliance SOA Programme Board on 6th November 2015 that there will be three “Wellbeing Localities” in Inverclyde. These will be known as Inverclyde East, Inverclyde Central and Inverclyde West (Refer to Appendix C). The concept of “wellbeing localities” reinforces our vision of Getting it Right for Every Child, Citizen and Community and the role of the wellbeing indicators that are embedded in the partnership’s planning structure.

With regards to implementing Community Justice the locality planning arrangements will be applied. This will enable a common language to be used by all partners around wellbeing, while also considering data specific to Inverclyde as a whole, right down to individual ward information where partnership resources can be targeted to ensure they make the maximum impact and services can be localised and flexible.

What have communities told us?

From Police Scotland *Your View Counts*” report for Renfrewshire and Inverclyde (April-June 2016), when asked “what is your perception of crime in your local area over the past year” respondents indicated:

- Increased a lot 19.8% (96);
- Increased a little 21.4% (104);
- Remained the same 38.1% (185)
- Decreased a little 8.6% (42)
- Decreased a lot 4.3% (21)
- No reply 7.8% (38)

Mental Health in Focus: A profile of mental health and wellbeing in Greater Glasgow & Clyde, (2011) produced by the Glasgow Centre for Population Health states in the Inverclyde Profile.

“In Inverclyde perceptions of local crime were 36% higher than the Scottish average (an estimated 78% of Inverclyde adults reported that crime was “very or fairly common in their area” compared to 57% in Scotland). This contrasted with the relatively low level of both acquisitive crime (170 in Inverclyde versus 238 per 10,000 in GG&C) and offenders and victims of violent crime (30% and 22% lower in Inverclyde compared to GG&C).”

From initial public engagement activity undertaken by the Community Justice Partnership:

- 40.51% indicated “I’m not aware of community justice”;
- 37.80% of respondents indicated “I think I’ve heard about community justice” and
- 18.82% of respondents indicated “I am aware of community justice”.

When asked “how confident are you that community justice will make a difference in Inverclyde”

- 14.12% indicated they were “not at all confident”;
- 21.18% indicated they were “slightly confident”;
- 48.24% indicated “on balance, I think it should make a difference”;
- 10.59% indicated “I think it will make a significant difference”.

What early and preventative approaches are we taking?

There are many existing early intervention and prevention initiatives in Inverclyde that will cross-cut with implementing the community justice agenda locally. Some of these include:

- Early and Effective Intervention Group targeting young people;
- Whole Systems Approach to tackle offending and re-offending in youth justice that is now being extended into the adult criminal justice approach;
- The Shine mentoring post for women at risk of breaching their court order and women leaving prison following serving a short sentence to support them in accessing local services;
- Mentors in violence prevention, hosted by Community Safety as part of the Violence Against Women Strategy 2012-2017 targeting young people;
- Arrest Referral / Persistent Offenders Partnership works to prevent further offending and custodial sentences with the aim of breaking the cycle of alcohol and drug misuse and crime.
- Development of community facing community justice approach to make a visible difference in local communities, for example, on projects with people serving community payback orders or on a custodial sentence.

The Inverclyde Community Justice Partnership has initiated and has a lead role in developing a regional Early Intervention Strategy alongside neighbouring local authorities of Renfrewshire, East Renfrewshire, West Dunbartonshire, East Dunbartonshire and Argyll and Bute.

What will be different for communities in ten years?

- All of our local communities will have a good understanding of community justice.
- People from local communities will be actively involved in developing community justice in Inverclyde.
- People will recognise the difference community justice has made in improving their community.
- There will be a reduced local perception of crime.
- People have developed new skills as part of community capacity building.
- There are a wide variety of local supports available including from the public, private, third sector and community organisations.

What resources are available to achieve this outcome?

- Each Community Justice Partner is committed to delivering this outcome and the Portfolio Lead will consider potential resources and include these as part of the Community Justice Strategic Commissioning Strategy.
- While Scottish Government has provided transitional funding for local implementation of community justice; there is no indication as yet to continuing this funding beyond this period. Partners individually and collectively continue to make the case for this funding to be recurring and mainstreamed.

Mapping of this Outcome

National Outcome	SOA / LOIP Outcome	Wellbeing Indicator
We have strong, resilient and supportive communities where people take responsibility for their own actions and how they affect others.	Communities are stronger, responsible and more able to identify, articulate and take action on their needs and aspirations to bring about an improvement in the quality of community life.	Safe - Protected from abuse, neglect or harm and supported when at risk. Enabled to understand and take responsibility for actions and choices. Having access to a safe environment to live and learn in.
We live our lives safe from crime, disorder and danger.	A positive culture change will have taken place in Inverclyde in attitudes to alcohol, resulting in fewer associated health problems, social problems and reduced crime rates.	Nurtured - Having a nurturing place to live and learn, and the opportunity to build positive relationships within a supporting and supported community.
Our public services are high quality, continually improving, efficient and responsive to local people's needs.	Our public services are high quality, continually improving, efficient and responsive to local people's needs.	Respected & Responsible - Respected and share responsibilities. Citizens are involved in decision and making and play an active role in improving the community.

1. Communities improve their understanding and participation in community justice.

Ref	Indicator	Action / Measure	Lead	Timescale	RAG Status
1.1	Activities carried out to engage with “communities” as well as other relevant constituencies.	a. Develop Communication & Engagement Strategy.	CVS Inverclyde	Complete	Green
		b. Develop Communication & Engagement Plan.		April 2017	
		c. Develop local measures and feedback process. Link this to an improvement cycle.		2017	
1.2	Consultation with communities as part of community justice planning and service provision.	a. Develop a consultation process that feeds into the planning and improvement cycle.	CVS Inverclyde	2017	
		b. Develop a specific consultation process for Unpaid Work and other service users; victims and witnesses, families and children and young people affected by the criminal justice system.		2017	
		c. Map consultation for partner plans and link to Community Justice (Inverclyde Communication and Engagement and Capacity Building Network, HSCP, Police, Fire & Rescue, ADP, Housing etc.)		2017	
1.3	Participation in community justice,	a. Develop a Participation Strategy and Plan.	CVS Inverclyde	2017	

Positive Lives, Strengthening Communities

	such as co-production and joint delivery.	b. Develop an asset based approach and community capacity building.		2017-2018	
		c. Explore opportunities for joint delivery using community assets.		2017-2018	
1.4	Level of community awareness of / satisfaction with work undertaken as part of a CPO.	a. Evaluate the effectiveness of community consultation and customer feedback and link to an improvement cycle.	CVS Inverclyde	2018-2019	
		b. Incorporate customer / community feedback as part of Community Justice Quality Assurance reporting.		2017-2018	
1.5	Evidence from questions to be used in local surveys / citizens panels etc.	a. Develop a question set that includes awareness, visibility, understanding, confidence and participation.	CVS Inverclyde	Complete	Green
		b. Outline in the Communication and Engagement Plan a programme of opportunities when the question set will be used. (This should link with Inverclyde Communication and Engagement and Capacity Building Network activity)		April 2017	
1.6	Perceptions of the local crime rate.	a. Incorporate this as part of a local community justice performance framework.	CVS Inverclyde	2017	

Positive Lives, Strengthening Communities

Local Outcomes and Indicators					
Ref	Indicator	Action / Measure	Lead	Timescale	RAG Status
1.7	Raise the profile and promote community justice.	a. Capture examples of good practice and positive case studies to use in communique. (See 1.1)	CVS Inverclyde	2017-2018	
1.8	Strengthen links with local employers.	a. Identify employment opportunities / placements and skills / training / volunteering opportunities that employer's need.	CVS Inverclyde	2018-2019	

Common Outcome 2: Partners plan and deliver services in a more strategic and collaborative way.

Why is this outcome important?

Community justice involves complex matters and aims to address multi-faceted issues faced by people who live in our local communities. This cannot be accomplished by any single agency, but rather, will only be achieved through partnership working. A Community Justice Partnership has been established in Inverclyde where there is a strong commitment from each of the Community Justice Partners to work together to ensure the delivery of the community justice outcomes. This is further evidenced in the development of a Memorandum of Understanding and Terms of Reference which forms a strong foundation for the Community Justice Partnership.

The new model of community justice brings opportunities for local decision-making as part of community planning while also ensuring collective accountability to local communities. Inverclyde Community Justice Partnership has adopted a collaborative leadership model where there are Portfolio Leads for each of the four structural common outcomes who will feed into the overarching Community Justice Partnership. This will ensure there is strong local leadership from various Community Justice Partners.

What have communities told us?

From initial public engagement, when asked “how confident are you that community justice will make a difference in Inverclyde”

- 14.12% indicated they were “not at all confident”;
- 21.18% indicated they were “slightly confident”;
- 48.24% indicated “on balance, I think it should make a difference”;
- 10.59% indicated “I think it will make a significant difference”.

What early and preventative approaches are we taking?

The Community Justice Partnership will build on the strong partnership working that already exists in Inverclyde, together with the Community Safety Partnership, Alcohol and Drug Partnership, Financial Inclusion Partnership as well as strengthening public protection arrangements including child protection, adult protection, MAPPA and the Violence Against Women MAP.

The Inverclyde Community Justice Partnership has initiated and has a lead role in developing a regional Early Intervention Strategy alongside neighbouring local authorities of Renfrewshire, East Renfrewshire, West Dunbartonshire, East Dunbartonshire and Argyll and Bute.

What will be different for communities in ten years?

- There will be a strong Community Justice Partnership, where there is evidence of leverage and pooling resources to deliver innovative and high quality services.
- A strategic approach to commissioning has been developed that recognises the role of public, private, third sector and community organisations, is outcome focused, demonstrates collaborative practice while meeting local needs.
- Services will be more efficient and effective, receiving positive feedback from people who access these services.
- Community Justice Partner's workforce feels recognised and supported in their role of delivering excellent services.

What resources are available to achieve this outcome?

- Each Community Justice Partner is committed to delivering this outcome and the Portfolio Lead will consider potential resources and include these as part of the Community Justice Strategic Commissioning Strategy.
- While Scottish Government has provided transitional funding for local implementation of community justice; there is no indication as yet to continuing this funding beyond this period. Partners individually and collectively continue to make the case for this funding to be recurring and mainstreamed.

Mapping of this Outcome

National Outcome	SOA / LOIP Outcome	Wellbeing Indicator
Our public services are high quality, continually improving, efficient and responsive to local people's needs.	Our public services are high quality, continually improving, efficient and responsive to local people's needs.	Safe - Protected from abuse, neglect or harm and supported when at risk. Enabled to understand and take responsibility for actions and choices. Having access to a safe environment to live and learn in.
We live our lives safe from crime, disorder and danger.	Communities are stronger, responsible and more able to identify, articulate and take action on their needs and aspirations to bring about an improvement in the quality of community life.	Nurtured - Having a nurturing place to live and learn, and the opportunity to build positive relationships within a supporting and supported community.
We have tackled the significant inequalities in Scottish society.	A positive culture change will have taken place in Inverclyde in attitudes to alcohol, resulting in fewer associated health problems, social problems and reduced crime rates.	Respected & Responsible - Respected and share responsibilities. Citizens are involved in decision and making and play an active role in improving the community.

2. Partners plan and deliver services in a more strategic and collaborative way.

Ref	Indicator	Action / Measure	Lead	Timescale	RAG Status
2.1	Services are planned for and delivered in a strategic and collaborative way.	a. A high level self-evaluation will be undertaken on an annual basis as part of a quality assurance cycle.	Police Scotland	2017	
		b. A regional (across six NSCJA Local Authorities) Prevention and Early Intervention Strategy will be developed.		2017	Amber
		c. A Community Justice Strategic Commissioning Strategy will be developed. This will include identifying potential opportunities for tests of change.		2018	
		d. Develop a Participation Strategy and Plan. (See 1.3)		2017	
		e. Ensure transition planning is in place, including for young people and that this is reflected in both community justice and integrated children's service planning.		2017	
2.2	Partners have leveraged resources for community justice.	a. A Community Justice Strategic Commissioning Strategy will be developed. (See 2.1)		2018	
		b. The Community Justice Partnership will explore every opportunity for leverage of		2017	

Positive Lives, Strengthening Communities

		resources and report on this as part of the performance framework. (See 1.6)			
2.3	Development of community justice workforce to work effectively across organisations / professional / geographical boundaries.	a. A Workforce Plan will be developed and incorporated into the Strategic Community Justice Commissioning Strategy. This will take cognisance of existing community justice partner's workforce developments. (See 2.1)	Police Scotland	2018	
2.4	Partners illustrate effective engagement and collaborative partnership working with the authorities responsible for the delivery of MAPPA.	a. Existing arrangements will continue with regards to the delivery of MAPPA. These will be reviewed on an annual basis.	Police Scotland	2017	

Positive Lives, Strengthening Communities

Local Outcomes and Indicators					
Ref	Indicator	Action / Measure	Lead	Timescale	RAG Status
2.5	Improve partnership information sharing.	a. Map existing information sharing protocols and review these where appropriate.	Police Scotland	2017-2018	
		b. Develop opportunities to share good practice and for joint training. (See 2.3)	Police Scotland	2017	

Common Outcome 3: People have better access to the services they require, including welfare, health and wellbeing, housing and employability.

Why is this outcome important?

The Scottish Index of Multiple Deprivation measures a number of factors across seven domains including employment, income, health, and education to give an overall score of deprivation for small geographic areas of roughly equal population sizes called data zones.

The key points to emerge from SIMD 2016 include:

- The number of Inverclyde datazones in the 5% most deprived in Scotland has fallen by 3 from 14 to 11. This equates to 9.6% of all 114 Inverclyde datazones in the 5% most deprived category.
- The number of Inverclyde datazones in the 15% most deprived in Scotland decreased by 3 from 44 to 41. This equates to 36% of Inverclyde's datazones featuring in the 15% most deprived. This compares to 40% in SIMD 2012.
- The most deprived datazone in Inverclyde is SO1010891 which is found in Greenock Town Centre and East Central. It is ranked 23 in the overall ranking for Scotland.
- The least deprived datazone in Inverclyde is S01010821 which is found in Kilmacolm, Quarriers, Greenock Upper East/Central. It is ranked 6741 in the overall ranking for Scotland.
- Both income and employment deprivation continue to be higher in Inverclyde than Scotland as a whole. Inverclyde is second behind Glasgow in overall levels of deprivation (local share of datazones which are in the top 20% most deprived).

The on-going welfare reforms are continuing to have a detrimental impact on the lives of people in Inverclyde. The latest update from Sheffield Hallam University (March, 2016) highlights:

- Increase in non-dependent deductions, Inverclyde is in the UK 20 worst affected local authorities and 3rd highest in Scotland;
- Introduction of Personal Independent Payments (PIP), Inverclyde is in the UK 20 worst affected local authorities and 3rd highest in Scotland;

- Current Employment Support Allowance (ESA) reforms, Inverclyde is the UK 20 worst affected local authorities and 3rd highest in Scotland;
- ESA new reforms, Inverclyde is the UK 20 worst affected local authorities and 5th highest in Scotland.

The links between poverty and health are well documented and for many years Inverclyde has been characterised by some notably unequal health and socio-economic outcomes. The causes of inequality are well-evidenced in terms of economic and work-related opportunities; levels of education; access to services and societal or cultural norms. Health inequalities are therefore inextricably linked to the unequal distribution of a range of opportunities.

There is a significant gap between our more affluent areas and those which experience high levels of poverty and deprivation. In our most deprived and disadvantaged areas, people face multiple problems such as ill-health; high levels of unemployment and economic inactivity; poor educational achievement / attainment; low levels of confidence and low aspirations; low income; poor housing and an increased fear of crime. In addition, Inverclyde has particular issues relating to alcohol.

Housing provision is a key outcome in the context of community justice, where it is recognised that there is a link between finding and / or keeping stable accommodation and reducing re-offending. Furthermore, it is also recognised that housing impacts on health (both physical and mental health); drug or alcohol use and overall wellbeing. These in turn can then create barriers for employment opportunities. In a recent study, *Housing and Reoffending: Supporting People Who Serve Short-Term Sentences to Secure and Sustain Stable Accommodation on Liberation* (2015), Scottish Government, a common message from people who had committed offences was that housing issues made desistance from offending less likely and that they had committed further offences directly or indirectly as a result of their housing circumstances.

What have people who have committed offences told us?

- “It would be good if I could get support doing a job search...I don’t know how to go about college...I need a routine as boredom is a major issue.”
- “I need something productive to do and need help to look for a job.”

- Someone being released from prison the following week from being interviewed advised “I have seen my Drugs Worker and my Housing Worker (from community). I’ll be going to the homelessness centre on release and seeing my GP on day of release too...I’ll plan to go to the benefits office.”
- “I would like to do hairdressing at college”
- “Community justice sounds interesting. My problem is loneliness.”

What early and preventative approaches are we taking?

The HSCP has identified five strategic commissioning themes that are cross-cutting with this outcome. These include:

- Employability and meaningful activity
- Recovery and support to live independently
- Early intervention, prevention and reablement
- Support for families
- Inclusion and empowerment

Also, there is an existing Access to Services workstream within the HSCP.

Economic Development in partnership with the HSCP is in the process of developing an Inclusion Group where the focus will be on employability.

What will be different for communities in ten years?

- Access to services will be organised in a way that is responsive to how people would like to use them.
- Barriers to accessing services will be addressed.
- People will experience a smooth transition at key stages of their journey.
- There will be a range of community supports available as part of a recovery model.

What resources are available to achieve this outcome?

- Each Community Justice Partner is committed to delivering this outcome and the Portfolio Lead will consider potential resources and include these as part of the Community Justice Strategic Commissioning Strategy.

- While Scottish Government has provided transitional funding for local implementation of community justice; there is no indication as yet to continuing this funding beyond this period. Partners individually and collectively continue to make the case for this funding to be recurring and mainstreamed.
- Much of this agenda can be joined to existing workstreams being taken forward across the HSCP where there is a particular focus on diversity and equality of access.

Mapping of this Outcome

National Outcome	SOA / LOIP Outcome	Wellbeing Indicator
We live longer, healthier lives.	The health of local people is improved, combating health inequality and promoting healthy lifestyles.	Healthy – Achieve high standards of physical and mental health and equality of access to suitable health care and protection, while being supported and encouraged to make healthy and safe choices.
We have tackled the significant inequalities in Scottish society.	The area’s economic regeneration is secured, economic activity in Inverclyde is increased, and skills development enables both those in work and those furthest from the labour market to realise their full potential.	Achieving - Being supported and guided in lifelong learning. Having opportunities for the development of skills and knowledge to gain the highest standards of achievement in educational establishments, work, leisure or the community.
We live in well-designed, sustainable places where we are able to access the amenities and services we need.	A positive culture change will have taken place in Inverclyde in attitudes to alcohol, resulting in fewer associated health problems, social problems and reduced crime rates.	Active – Having opportunities to take part in activities and experiences in educational establishments and the community, which contribute to a healthy life, growth and development.
		Included – Overcoming social, educational, health and economic inequalities and being valued as part of the community.

3. People have better access to the services they require, including welfare, health and wellbeing, housing and employability.

Common Outcomes and Indicators

Ref	Indicator	Action / Measure	Lead	Timescale	RAG Status
3.1	Partners have identified and are overcoming structural barriers for people accessing services.	a. Barriers are identified and included in the Community Justice Profile and self-evaluation. (See 2.1)	HSCP	2017	
		b. Develop an Improvement Plan detailing appropriate steps to address each barrier.		2017	
3.2	Existence of joint-working arrangements such as processes / protocols to ensure access to services to address underlying needs.	a. Review existing arrangements, including processes and protocols ensuring appropriate access to services at every part of the recovery journey. This will include welfare, health and wellbeing, housing and employability. (See 2.1)	HSCP	2017-2019	
		b. Develop an Improvement Plan detailing appropriate steps to address any gaps and barriers to services. (See 3.1)		2017	
3.3	Initiatives to facilitate access to services.	a. Consider the responsiveness of services and local supports available to aid access to services. (See 2.1 and 3.1)	HSCP	2017	
		b. Review current pathways in place on specific initiatives including mentoring, throughcare, employability, education and other pro-social activities. (See 2.1		2017-2018	

Positive Lives, Strengthening Communities

		and 3.1)			
		c. Develop performance measures and include these in the performance reporting framework. (See 1.6 and 2.2)		2017-2018	
3.4	Speed of access to mental health services.	a. 90% of patients to commence psychological therapy based treatment within 18 weeks of referral, recognising that the data will include the whole community. (See 1.6, 2.2 and 3.3)	HSCP		Green HEAT Target GG&C 95.8% HSCP 100%
3.5	Speed of access to drug and alcohol services.	a. 90% of clients will wait no-longer than 3 weeks from referral received to appropriate drug or alcohol treatment that supports their recovery, recognising the data will include the whole community.(See 1.6, 2.2, 3.3 and 3.4)	HSCP		Green HEAT Target GG&C 97.9% HSCP 98%
3.6	% of people released from a custodial sentence: <ul style="list-style-type: none"> • Registered with a GP; • Have suitable accommodation; • Have had a benefits eligibility check. 	a. Incorporate these measures into the performance reporting framework and improvement cycle. (See 1.6, 2.2, 3.3, 3.4 and 3.5)	HSCP	2017	

Local Outcomes and Indicators					
Ref	Indicator	Action / Measure	Lead	Timescale	RAG Status
3.7	Improve access to housing for those involved in the criminal justice system.	a. Strengthen links with local housing providers and strategic housing forum.	HSCP	2017	
		b. Develop an annual practitioner forum to promote best practice relating to homelessness and housing. (See 2.3)		2017	
3.8	Enable people to engage with services.	a. Gain a better understanding of the barriers that exist that prevent engagement with services.	HSCP	2017-2018	
3.9	Staff providing universal and specialist adult services have an understanding of community justice.	a. Raise the profile of community justice across universal and specialist adult services. (See 2.3)	HSCP	2017-2019	
		b. Develop “ambassadors” of community justice in key services.			
3.10	Explore local health and wellbeing resources.	a. Strengthen links with local leisure / sports providers and community organisations.	HSCP	2017-2019	

Common Outcome 4: Effective interventions are delivered to prevent and reduce the risk of further offending.

Why is this outcome important?

Currently there is a wide spectrum of interventions, provided by a range of Community Justice Partners. There is also increasing research to indicate “what works”. There are key national developments that will impact on the use of interventions including reducing short-term prison sentences, reducing the use of remand and an increased use of electronic monitoring using new available technologies. The Scottish Government is seeking to see a reduction in the use of custody and an increase in the use of community alternatives.

There are key messages from research that suggests the direction for delivering effective interventions. These include:

- Interventions are more effective when they are person-centred.
- Short term sentences are not designed to address an individual needs, but rather, may actually have a detrimental impact on employment, family contact and housing.
- How interventions are delivered and processed can have a negative impact and keep people in the criminal justice system.
- Increasing efforts of providing low-level supports at an early stage as part of an early intervention approach is more effective.
- Relationships can have a significant impact on the success of an intervention, including family relationships and social networks. The importance of the quality of the relationship with staff, particularly when delivering supervision is crucial.
- Adopting an asset and strength based approach to the delivery of an intervention may be more effective where a recovery model is being adopted.

At a local level it is important to know the range of available interventions across all Community Justice Partners and the effectiveness of each of these. This will also inform future resource deployment and commissioning decisions.

There is also a need to track and identify the timeline for several key national initiatives and how these will impact on any increase in demand for community interventions. These include the extension of the

presumption against short term sentences; electronic monitoring; reducing the use of remand and changes in the women's custody estate.

What have communities told us?

An important message from people in our local communities is that there is a lack of understanding of the range of interventions and the effectiveness of these. The traditional intervention people feel most familiar with is custody and there is an opportunity to have community conversations promoting existing community interventions, while also outlining various interventions delivered as part of a custodial sentence.

Current feedback mechanisms would suggest that service users are generally satisfied with their experience of interventions.

Further engagement with victims and witnesses will assist in our understanding of their perceptions of the range of interventions.

What early and preventative approaches are we taking?

- The Inverclyde Community Justice Partnership has initiated and has a lead role in developing a regional Early Intervention Strategy alongside neighbouring local authorities of Renfrewshire, East Renfrewshire, West Dunbartonshire, East Dunbartonshire and Argyll and Bute.

What will be different for communities in ten years?

- Interventions will be person-centred to ensure we maximise their effectiveness.
- Interventions will be evidence-based.
- There will be robust evidence around the efficiency of how we are deploying resources in the delivery of effective interventions.
- People in communities will have a better understanding of the range of available interventions.
- More early intervention approaches will be developed.

What resources are available to achieve this outcome?

- Each Community Justice Partner is committed to delivering this outcome and the Portfolio Lead will consider potential resources and include these as part of the Community Justice Strategic Commissioning Strategy.
- While Scottish Government has provided transitional funding for local implementation of community justice; there is no indication as yet to continuing this funding beyond this period. Partners individually and collectively continue to make the case for this funding to be recurring and mainstreamed.

Mapping of this Outcome

National Outcome	SOA / LOIP Outcome	Wellbeing Indicator
We have improved the life chances for children, young people and families at risk.	The health of local people is improved, combating health inequality and promoting healthy lifestyles.	Healthy – achieve high standards of physical and mental health and equality of access to suitable health care and protection, while being supported and encouraged to make healthy and safe choices.
We live our lives safe from crime, disorder and danger.	A positive culture change will have taken place in Inverclyde in attitudes to alcohol, resulting in fewer associated health problems, social problems and reduced crime rates.	Active – Having opportunities to take part in activities and experiences in educational establishments and the community, which contribute to a healthy life, growth and development.
Our public services are high quality, continually improving, efficient and responsive to local people's needs.	Our public services are high quality, continually improving, efficient and responsive to local people's needs.	Included – Overcoming social, educational, health and economic inequalities and being valued as part of the community.

4. Effective interventions are delivered to prevent and reduce the risk of further offending.

Ref	Indicator	Action / Measure	Lead	Timescale	RAG Status
4.1	Targeted interventions have been tailored for and with an individual and had a successful impact on their risk of further offending.	a. Map existing intervention options and evaluate the effectiveness of these.	HSCP	2017-2019	
		b. Identify gaps and develop an Improvement Plan. (See 2.1 and 3.1)		2017-2019	
		c. Develop a Community Justice Strategic Commissioning Strategy, including targeted interventions and community capacity building opportunities. (See 2.1 and 3.1)		2018	
4.2	Use of “other activities requirement” in CPO’s.	a. Evaluate the current use of “other activities requirement” in CPO’s, ensuring these are person-centred.	HSCP	2017-2018	
		b. Identify community capacity opportunities and develop an Improvement Plan. (See 2.1 and 3.1)		2017-2018	
4.3	Quality of CPO’s and DTTO’s.	a. Develop a quality assurance and reporting framework. (See 1.4 and 2.1)	HSCP	2017	

Positive Lives, Strengthening Communities

4.4	<p>Reduced use of custodial sentences and remand:</p> <ul style="list-style-type: none"> • Balance between community sentences relative to short custodial sentences under 1 year. • Proportion of people appearing from custody who are remanded. 	<p>a. Develop a quantitative measure to outline the impact of initiatives to shift the balance between custody and non-custodial measures and sentences. Incorporate this into the Community Justice Performance Framework. (See 1.6, 2.2, 3.3, 3.4, 3.5 and 3.6)</p>	HSCP	2018	
4.5	<p>The delivery of interventions targeted at problem drug and alcohol use.</p>	<p>a. Develop a measure to report on the number of Alcohol Brief Interventions delivered in criminal justice healthcare settings. Include this in the Community Justice Performance Framework. (See 1.6, 2.2, 3.3, 3.4, 3.5, 3.6 and 4.4)</p>	HSCP	April 2017	<p>Primary Care 101</p> <p>Wider Setting 18</p>
<p>b. Develop a measure to report on the number of referrals from criminal justice sources to drug and alcohol specialist treatment. Include this in the Community Justice Performance Framework. (See 1.6, 2.2, 3.3, 3.4, 3.5, 3.6, 4.4 and 4.5)</p>	2017				

Positive Lives, Strengthening Communities

4.6	Numbers of police recorded warnings, police diversion, fiscal measures, fiscal diversion, supervised bail, community sentences (including CPO's, DTTO's and RLO's).	a. Capture the number of police recorded warnings; police diversion; fiscal measures, (including fines, fiscal work orders, fiscal compensation order and fixed penalty notice), fiscal diversion to social work; supervised bail and community sentences. Include this in the Community Justice Performance Framework. (See 1.6, 2.2, 3.3, 3.4, 3.5, 3.6, 4.4, and 4.5)	HSCP	2017-2018	
4.7	Number of short-term sentences under 1 year.	a. Capture a measure to profile the risks and needs of people and identify projected demand in services related to the number of custodial sentences imposed where the full term was for less than 12 months. Include this in the Community Justice Performance Framework. This will be informed by the national timeline of this national agenda. (See 1.6, 2.2, 3.3, 3.4, 3.5, 3.6, 4.4, 4.5, and 4.6)	HSCP	2017	

Positive Lives, Strengthening Communities

Local Outcomes and Indicators					
Ref	Indicator	Action / Measure	Lead	Timescale	RAG Status
4.8	Adopt a recovery model approach in interventions.	a. Consider current recovery models and apply learning from these.	HSCP	2017-2018	
		b. Develop an asset based and strength based model of recovery.		2017-2018	
4.9	Identify gaps in services.	a. Evaluate current provision relating to domestic abuse and consider ways to enhance supports. (see 2.1)	HSCP	2018	
		b. Identify appropriate options as tests for change.		2018	
4.10	Consider early intervention on a regional basis.	a. Develop a regional Early Intervention Strategy. (See 2.1)	HSCP	2017	Amber

The following three person-centric outcomes and measures will be delivered as part of elements being progressed under the previous four structural outcomes and as such will be led by the Community Justice Partnership Portfolio Leads.

Common Outcome 5: Life chances are improved through needs, including health, financial inclusion, housing and safety being addressed.

5. Life chances are improved through needs, including health, financial inclusion, housing and safety being addressed.					
Ref	Indicator	Action / Measure	Lead	Timescale	RAG Status
5.1	Individuals have made progress against the outcome.	a. As part of a Quality Assurance Framework, develop service user feedback and outcome measures to triangulate and report progress on this outcome. (See 1.4, 2.1 and 4.3)	All Portfolio Leads	2017	
Local Outcomes and Indicators					
Ref	Indicator	Action / Measure	Lead	Timescale	RAG Status
5.2	Explore models of supported employment.	a. Consider personal placement and individual support programme models. (See 1.8)	CVS Inverclyde	2018	

Common Outcome 6: People develop positive relationships and more opportunities to participate and contribute through education, employment and leisure activities.

6. People develop positive relationships and more opportunities to participate and contribute through education, employment and leisure activities.					
Ref	Indicator	Action / Measure	Lead	Timescale	RAG Status
6.1	Individuals have made progress against this outcome.	a. As part of a Quality Assurance Framework, develop service user feedback and outcome measures to triangulate and report progress on this outcome. (See 1.4, 2.1, 4.3 and 5.1)	All Portfolio Leads	2017	

Common Outcome 7: Individual’s resilience and capacity for change and self-management are enhanced.

1. Individual’s resilience and capacity for change and self-management are enhanced.					
Ref	Indicator	Action / Measure	Lead	Timescale	RAG Status
7.1	Individuals have made progress against this outcome.	a. As part of a Quality Assurance Framework, develop service user feedback and outcome measures to triangulate and report progress on this outcome. (See 1.4, 2.1, 4.3, 5.1 and 6.1)	All Portfolio Leads	2017	
Local Outcomes and Indicators					
Ref	Indicator	Action / Measure	Lead	Timescale	RAG Status
7.2	Better understanding of reasons for offending to ensure appropriate interventions are provided.	a. Develop a recovery model that is person-centred and incorporates trauma informed practice.	HSCP and Police Scotland	2018	
		b. Develop training opportunities for staff and any necessary guidance. (See 2.3 and 3.7)		2018-2019	
		c. Explore peer support and mentoring opportunities as part of an intervention support. (See 2.3, 3.7 and 7.2)		2018-2019	

6. Going Forward

While we recognise there is increasing pressures on public services and the services commissioned by them; community justice is offering a positive way forward. There is a strong commitment from each of the community justice partners in delivering this plan locally and more importantly bringing the vision of “positive lives, strengthening communities” into a reality.

We are at the initial phase of ensuring all the necessary building blocks are in place, both at a local and national level. Thereafter there will be strong leadership and partnership working to further develop community justice with people who have committed offences and are involved in a stage of the community justice pathway; with the victims of crime and witnesses of it; with children and families affected by it as well as people from local communities themselves.

We also look forward to working with the newly formed Community Justice Scotland to develop examples of innovation and collaborative practice.

Appendix A Key National Strategies and Legislation for Community Justice

Legislation Summary

Social Work (Scotland) Act 1968

The National Health Service (Scotland) Act 1978

The NHS and Community Care Act 1990

Carers (Recognition and Services) Act 1995

The Community Care and Health (Scotland) Act 2005

Public Services Reform (Scotland) Act 2010

The Adult Support and Protection (Scotland) Act 2007

Carers (Scotland) Act 2016

Protection of Children and Prevention of Sexual Offences (Scotland) Act 2005

Sexual Offences (Scotland) Act 2009

Children's Hearings (Scotland) Act 2011

Children and Young People (Scotland) Act 2014

Children (Scotland) Act 1995

Victim & Vulnerable Witness (s) Act 2014

Criminal Procedure (Scotland) Act 1995

Criminal Justice (Scotland) Act 2003

The Rehabilitation of Offenders Act 1974 (Exclusions and Exceptions) (Scotland) Amendment Order 2015

Disabled Persons (Employment) Act 1944

Chronically Sick and Disabled Persons Act 1970

Human Rights Act 2000

Equality Act 2010

The Equality Act 2010 (Specific Duties) (Scotland) Regulations 2012

Housing (Scotland) Act 1987

Housing (Scotland) Act 2001

Homelessness etc. (Scotland) Act 2003

Public Bodies (Joint Working) (Scotland) Act 2014

Local Government (Scotland) Act 2003

Community Empowerment (Scotland) Act 2015

Adults with Incapacity (Scotland) Act 2000

Mental Health (Care and Treatment) (Scotland) Act 2003

Social Care (Self-Directed Support) (Scotland) Act 2013

Education (Additional Support for Learning) (Scotland) Act 2004

Welfare Reform (Further Protection) (Scotland) Act 2012

Police and Fire Reform (Scotland) Act 2012

National Policy Framework

Crown Office & Procurator Fiscal Service Strategic Plan

Equally Safe: Scotland's Strategy for Preventing and Eradicating Violence Against Women and Girls

Better health, Better Lives for Prisoners: A Framework for Improving the Health of Scotland's Prisoners

Healthier People Safer Communities: Working Together to Improve Outcomes for Offenders

Review of Health Care Needs of Prisoners in Relation to Throughcare

Shaping Scotland's Court Services

Evaluation of Community Payback Orders, Criminal Justice Social Work Reports and the Presumption Against Short Sentences

Evaluation of Sixteen Women's Community Justice Services in Scotland

Joint Thematic Review of MAPPA in Scotland

Creating a Fairer Scotland: A New Future for Employability Support in Scotland

The Criminal Justice Pathway for People with Learning Disability

Commission on the Future Delivery of Public Services

Commission on Women Offenders

Development of Electronic Monitoring

Strategic Police Priorities

Police Scotland Crime Prevention Strategy

Road Safety and Road Crime Strategy

Youth Justice Strategy

Scottish Fire and Rescue Strategic Plan

Relevant Inverclyde Plans

Single Outcome Agreement

HSCP Strategic Plan

Community Safety Strategic Assessment

Housing Strategy

Violence Against Women Multi-Agency Strategy

Integrated Children's Services Plan

Inverclyde Local Policing Plan

Local Fire and Rescue Plan for Inverclyde

Corporate Directorate Improvement Plans

Skills Development Scotland Inverclyde Skills Assessment

Inverclyde Parenting Strategy

Looked After Children's Strategy

GIRFEC Strategy and Implementation Plan

Youth Justice Strategy

HSCP Integrated Care Plan

Alcohol & Drug Partnership Strategy and Delivery Plan

Inverclyde Dementia Strategy

The Mental Health Strategy for Scotland (Local Implementation)

People Involvement in Inverclyde CHCP: A Framework

“Making Well-Being Matter in Inverclyde” Mental Health Improvement Delivery Plan

Suicide Prevention and Mental Health Improvement

Active Living Strategy

Financial Inclusion Strategy

Appendix B Inverclyde Community Justice Partnership Terms of Reference



**Inverclyde Community Justice Partnership
Terms of Reference**

Version	1.0
Date	26.11.15
Review Date	12.10.16
Produced by	Ann Wardlaw

Introduction

The Scottish Government’s National Strategy for Community Justice (Draft, July 2016) defines community justice as:

“The collection of individuals, agencies and services that work together to support, manage and supervise people who have committed offences, from the point of arrest, through prosecution, community disposal or custody and alternatives to these, until they are reintegrated into the community. Local communities and the third sector are a vital part of this process which aims to prevent and reduce further offending and the harm that it causes, to promote desistance, social inclusion, and citizenship.”

The Community Justice (Scotland) Act 2016 is the legislative vehicle for implementing this new model whereby responsibility will transfer to local strategic planning and delivery while disbanding the current Community Justice Authorities.

The Community Justice Division has identified four key themes in the national Community Justice Strategy and that are also reflected in the national performance framework, both of which are currently being progressed. These include:

- Improved community understanding and participation.
- Strategic planning and partnership working.
- Effective use of evidence-based interventions.
- Equal access to services.

The national Community Justice Outcomes, Performance and Improvement Framework (Draft July 2016) details four structural outcomes and three-person-centric outcomes as outlined below.

Structural Outcomes	Person-Centric Outcomes
<ul style="list-style-type: none"> • Communities improve their understanding and participation in community justice. 	<ul style="list-style-type: none"> • Life chances are improved through needs, including health, financial inclusion, housing and safety being addressed. • People develop positive relationships and more opportunities to participate and contribute through education, employment and leisure activities. • Individual’s resilience and capacity for change and self-management are enhanced.
<ul style="list-style-type: none"> • Partners plan and deliver services in a more strategic and collaborative way. 	
<ul style="list-style-type: none"> • Effective interventions are delivered to prevent and reduce the risk of further offending. 	
<ul style="list-style-type: none"> • People have better access to the services they require, including welfare, health and wellbeing, housing and employability. 	

These terms of reference define the remit and focus of the Community Justice Partnership in preparing for local implementation of the Community Justice (Scotland) Act 2016.

Aim

The aim of the Community Justice Transition Group is to ensure a seamless period of transition whereby a model of community justice is developed that reflects both the needs and strengths of Inverclyde.

The Community Justice (Scotland) Act 2016 details statutory partners to include:

- Local Authorities
- Health Boards
- Police Scotland
- Scottish Fire & Rescue Service
- Skills Development Scotland
- Integration Joint Boards
- Scottish Courts and Tribunal Service
- Scottish Ministers (Scottish Prison Service Scottish Courts and Procurator Fiscal Service)

In addition there are key non-statutory partners including the third sector. The Community Justice Partnership has representation from all of the statutory partners and key non-statutory partners.

Underpinning the emerging model of community justice in Inverclyde are the principles of Best Value; efficiency, effectiveness and equity of service provision across all partners.

Group Membership

Designation	Service
Head of Children's Services & Criminal Justice	HSCP and Integration Joint Board
Head of Planning, Health Improvement and Commissioning	HSCP and Integration Joint Board
Community Justice Health Improvement Lead	Greater Glasgow & Clyde Health Board
Service Manager	HSCP Criminal Justice
Community Justice Lead Officer	Community Justice Partnership
Corporate Policy & Partnership Manager	Inverclyde Council
Legal Services Manager	Inverclyde Council
Service Manager	HSCP Youth Justice
Planning Officer	NSCJA
Single Point of Contact	Scottish Court Service
Single Point of Contact	Procurator Fiscal
Team Leader	Skills Development Scotland
Governor, HMP Greenock	SPS (Representative for Community Justice)

Positive Lives, Strengthening Communities

Chief Superintendent	Police Scotland
HSCP Integration Facilitator	CVS Inverclyde
Group Manager	Scottish Fire and Rescue Service
Service Manager	Action for Children
Operations Manager	Turning Point
Community Safety and Wellbeing Manager	Housing, Safer & Inclusive Communities, Inverclyde Council
ADP Co-ordinator	Inverclyde ADP

Other members will be co-opted onto the partnership for specific projects as appropriate.

Scope and Methodology

The group will work across a wide range of partners and stakeholders in Inverclyde and will use the following to inform methodology:

- Community Justice (Scotland) Bill
- Consultation Events by Criminal Justice Division
- Local Community Justice Engagement Events
- Community Justice Strategy (when published)
- Community Justice Performance Framework (when published)
- Community Justice Guidance (when published)
- Community Empowerment (Scotland) Act 2015
- Best Value Toolkits
- GIRFECC approach across Inverclyde and SHANARRI Wellbeing Indicators
- Logic Modelling Toolkits
- Benchmarking
- Research on good practice examples
- Research on desistance and reducing re-offending
- The values of holding the people and communities of Inverclyde as the primary focus; recognising partners work better together; that all partners strive to improve and each partner individually and as a collective ensure transparency and accountability.

Reporting

The partnership will report to the SOA Programme Board and Inverclyde Alliance. Each partner will also report within their respective organisational governance structures.

Meetings

The partnership will meet on an eight-weekly basis and the quorum required will be that a minimum of three different agency partners are in attendance.

There is a clear expectation that this partnership will be required to make decisions and each partner has a responsibility to have an appropriate representative in

attendance who can contribute to this process. Where there are occasions where a partner is unable to have representation in attendance at a meeting; that partner has responsibility for ensuring they have submitted their feedback on matters being taken forward.

Structure

The partnership has agreed to develop a “Portfolio Leads” approach whereby there is a partner who will lead on each of the structural outcomes. These will all cross-cut with the three person-centric outcomes and will be evidenced through our quality assurance framework. The remit of a Portfolio Lead is to provide strategic leadership to progress and deliver on the respective actions of their portfolio detailed in the Community Justice Outcomes Improvement Plan. They will also provide updates to the Community Justice Partnership and governance bodies.

It is at the Portfolio Lead's discretion to consider how they progress each action; developing a sub-group or specific short-life working groups.

The Community Justice Lead Officer will support each Portfolio Lead.

Data Analysis

Data will be shared and collated across all partners in order to undertake all aspects of logic modelling and benchmarking, as well as being able to identify the impact of service delivery.

Dispute Resolution

Where there is a disagreement on a particular matter, in the first instance attempts should be made to resolve this within the partnership. Where this is not possible it may be necessary for the respective partner(s) and the chair of the group to meet out with the meeting to attempt resolution. A further option would be for the respective partners and the chair of the partnership to identify and agree to approach an independent person to act as a mediator. The final stage where all other steps have been fully exhausted is that the matter is considered at the SOA Programme Board for arbitration, whereby a final decision will be reached. An appropriate partner with expertise regarding the specific matter may be co-opted onto the SOA Programme Board for this purpose.

Recommendations

- That the terms of reference are used to steer the partnership during the implementation period of the Community Justice Outcomes Improvement Plan.
- As community justice is progressed the terms of reference may need periodic review.

Timescales

The following milestone dates have been identified:

Timescale	Milestones
1 st April 2016	Partners will assume their responsibilities under the new model as a shadow year alongside the current Community Justice Authorities.
24 th November 2016	The Community Justice Strategy; Community Justice Outcomes, Performance and Improvement Framework and Community Justice Guidance will be formally launched and published.
31 st March 2017	The Community Justice Partnership will submit and publish the first Community Justice Outcomes Improvement Plan.
31 st March 2017	Community Justice Authorities are formally dis-established.
1 st April 2017	The new model for Community Justice comes fully into effect.

How will we know we are getting there?

As well as by meeting the milestones identified, qualitative achievements would include:

1. There is an enhanced understanding among statutory and non-statutory partners of the concept of community justice and their role in progressing this within the communities of Inverclyde.
2. The model of community justice in Inverclyde is outcome-focused and person-centred.
3. The communities of Inverclyde are recognised as having a wide range of strengths on which to build on.
4. The foundations of effective partnership working are established with regards to community justice.

Appendix C Wellbeing Localities

Wellbeing Locality	Wellbeing Community	Wellbeing Neighbourhood	LEARNING COMMUNITY CLUSTER	COMMUNITY COUNCILS	WARD
Inverclyde East Wellbeing Locality	Kilmacolm & Quarriers Village	<ul style="list-style-type: none"> • Kilmacolm • Quarriers Village 	Port Glasgow High/Joint Campus	Kilmacolm	Ward 1 (Inverclyde East)
	Port Glasgow	<ul style="list-style-type: none"> • Devol • Slaemuir • Oronsay • Woodhall/Kelburn • Park Farm • Parkhill • Clune Park • Lilybank • Town Centre • Chapelton • Kingston Dock 		Port Glasgow East Port Glasgow West	Ward1 (Inverclyde East) Ward 2 (Inverclyde East Central)
Inverclyde Central Wellbeing Locality	Greenock Central and East	<ul style="list-style-type: none"> • Gibshill • Strone • Weir Street • Cartsdyke • Bridgend • Greenock Town Centre • Well Park • Drumfrochar • Broomhill • Propecthill 	Inverclyde Academy	Greenock East Greenock Central	Ward 2 (Inverclyde East Central) Ward 3 (Inverclyde North)
	Greenock South and	<ul style="list-style-type: none"> • Bow Farm 	Inverclyde	Holefarm &	Ward 4

Positive Lives, Strengthening Communities

Wellbeing Locality	Wellbeing Community	Wellbeing Neighbourhood	LEARNING COMMUNITY CLUSTER	COMMUNITY COUNCILS	WARD
	South West	<ul style="list-style-type: none"> • Grieve Road • Neil Street • Whinhill • Overton • Pennyfern • Peat Road • Hole Farm • Cowdenknowes • Barrs Cottage • Fancy Farm • Branchton • Braeside • Larkfield 	Academy	Cowdenknowes Greenock South West Larkfield, Braeside & Branchton	(Inverclyde South) Ward 6 (Inverclyde South West)
Inverclyde West Wellbeing Locality	Greenock West and Gourock	<ul style="list-style-type: none"> • Greenock West End • Cardwell Bay • Midton • Gourock Town Centre • Ashton • Levan • Trumpethill 	Clydeview Academy	Greenock West and Cardwell Bay Gourock	Ward 3 (Inverclyde North) Ward 5 (Inverclyde West)
	Inverkip & Wemyss Bay	<ul style="list-style-type: none"> • Inverkip • Wemyss Bay 	Inverclyde Academy	Wemyss Bay & Inverkip	Ward 6 (Inverclyde South West)

Inverclyde Community Justice Outcomes Improvement Plan 2017-2022

Summary Version



Inverclyde Community
Justice Partnership

This document can be made available in other languages, large print, and audio format upon request.

Arabic

هذه الوثيقة متاحة أيضا بلغات أخرى والأحرف الطباعية الكبيرة وبطريقة سمعية عند الطلب.

Cantonese

本文件也可應要求，製作成其他語文或特大字體版本，也可製作成錄音帶。

Gaelic

Tha an sgrìobhainn seo cuideachd ri fhaotainn ann an cànanan eile, clò nas motha agus air teip ma tha sibh ga iarraidh.

Hindi

अनुरोध पर यह दस्तावेज़ अन्य भाषाओं में, बड़े अक्षरों की छपाई और सुनने वाले माध्यम पर भी उपलब्ध है

Mandarin

本文件也可应要求，制作成其它语文或特大字体版本，也可制作成录音带。

Polish

Dokument ten jest na życzenie udostępniany także w innych wersjach językowych, w dużym druku lub w formacie audio.

Punjabi

ਇਹ ਦਸਤਾਵੇਜ਼ ਹੋਰ ਭਾਸ਼ਾਵਾਂ ਵਿਚ, ਵੱਡੇ ਅੱਖਰਾਂ ਵਿਚ ਅਤੇ ਆਡੀਓ ਟੇਪ 'ਤੇ ਰਿਕਾਰਡ ਹੋਇਆ ਵੀ ਮੰਗ ਕੇ ਲਿਆ ਜਾ ਸਕਦਾ ਹੈ।

Urdu

درخواست پر یہ دستاویز دیگر زبانوں میں، بڑے حروف کی چھپائی اور سننے والے ذرائع پر بھی میسر ہے۔



Contents

Welcome

The Community Justice (Scotland) Act 2016

What do we mean by community justice?

The partner organisations

What does community justice aim to do?

How will we know we have achieved this?

What is Inverclyde Community Justice Partnership going to do during 2017 – 2022?

Values we will use in delivering this plan



Welcome

Welcome to Inverclyde Community Justice Partnership
1st Inverclyde Community Justice
Outcomes Improvement Plan 2017-2022.

This is a five year plan, but we will look at it every year to check what we've done and what we still need to do.



Our Vision + Values =
Positive Lives,
Strengthening Communities



The Community Justice (Scotland) Act 2016

The Community Justice (Scotland) Act 2016 introduces this new model for community justice. There is also a National Strategy for Community Justice; an Outcomes Performance and Improvement Framework and Guidance.

These documents give an outline of:

- 1 What the term community justice means; and
- 2 What it aims to do.

What do we mean by community justice?

It is the collection of people, agencies and services that work together to support people who have committed an offence on the community justice pathway.



In Inverclyde we have developed Inverclyde Community Justice Partnership to help us do this.



Inverclyde Community Justice Partnership

The partner organisations are:

Inverclyde Health & Social Care Partnership

Inverclyde Council

NHS Greater Glasgow & Clyde

Action for Children

Crown Office & Procurator Fiscal Service

Scottish Prison Service

Turning Point Scotland

Scottish Fire and Rescue Service

Police Scotland

Scottish Courts & Tribunal Service

Skills Development Scotland

CVS Inverclyde



Inverclyde Community Justice Partnership

What does community justice aim to do?

There are four key things:

1. Communities are involved in community justice.
2. Partners work together to plan services.
3. Effective activities are delivered to prevent and reduce the risk of further offending.
4. People have better access to welfare, health and wellbeing, housing and employability.



How will we know we have achieved this?

1. People have better opportunities in life as their health, welfare, housing and safety needs have improved.



2. People have better connections with education, employment and leisure activities in their local community.



3. People feel stronger within themselves to change and manage any future difficulties.



What is Inverclyde Community Justice Partnership going to do during 2017 – 2022?

We will start to put in place the key building blocks:



Commissioning Strategy

- List all the things that are currently available to help support people.
- See if there are any gaps in supports.
- Plan how we can improve local supports.



Participation Strategy

- Involve people from local communities in community justice.
- Let people know about community justice.
- Ask people about the supports they receive and how they can be better.



Quality Assurance Framework

- Make sure supports are of a high standard and make a difference in people's lives and in our local communities.
- Provide training to staff from across the different agencies involved in community justice.



Partnership

- We will strengthen links with local housing providers, employers and community supports.



Activities

- Activities and supports will be focused on each individual's needs.
- We will learn from supports that have

helped people to recover from alcohol, drugs and mental health difficulties.

- We will try new ways of supporting people, including how people with lived experience of community justice can help.
- Where possible, offer support at an earlier stage.



Values we will use in delivering this plan



- We will ensure our services are delivered in such a way that the dignity and respect of service users is preserved.
- We will promote social justice.
- We will respect and value uniqueness and diversity while recognising and building on the strengths of the individual.
- We will promote people's right to choice, privacy, confidentiality and protection.
- We will assist people to improve the quality of and increase the control over their lives.
- We will operate in a manner that does not stigmatise or disadvantage individuals, groups or communities.
- We will promote equality of opportunity and access to services and not discriminate people or groups on grounds of protected characteristics of age; sex; sexual orientation; disability; religion or belief; race; marriage and civil partnership; pregnancy and maternity or gender reassignment.



Equality Impact Assessment

This document should be completed at the start of policy development or at the early stages of a review. This will ensure equality considerations are taken into account before a decision is made and policies can be altered if required.

SECTION 1 - Policy Profile

1 Name/description of the policy, plan, strategy or programme	Inverclyde Community Justice Outcomes Improvement Plan 2017-2022
2 Responsible organisations/Lead Service	Inverclyde Community Justice Partnership
3 Lead Officer	Ann Wardlaw
4 Partners/other services involved in the development of this policy	Inverclyde Integration Joint Board and Health and Social Care Partnership Inverclyde Council NHS Greater Glasgow & Clyde Crown Office & Procurator Fiscal Service Scottish Prison Service Scottish Fire and Rescue Service Police Scotland Scottish Courts & Tribunal Service Skills Development Scotland CVS Inverclyde Action for Children Turning Point Scotland
5 Is this policy:	New <input checked="" type="checkbox"/> Reviewed/Revised <input type="checkbox"/>
6 What is the purpose of the policy (include any new legislation which prompted the policy or changes to the policy)?	The Community Justice (Scotland) Act 2016 details the statutory partners who are responsible for ensuring the development of a local Community Justice Outcomes Improvement Plan. In addition there is statutory guidance that outlines the required process for developing local plans. The over-arching purpose of the new model for community justice is to

	reduce re-offending.
<p>7 What are the intended outcomes of the policy?</p>	<p>The National Strategy for Community Justice and the Outcomes, Performance and Improvement Framework indicates the intended outcomes, incorporating four structural outcomes resulting in three person-centric outcomes, are:</p> <ul style="list-style-type: none"> • Communities improve their understanding and participation in community justice. • Partners plan and deliver services in a more strategic and collaborative way. • Effective interventions are delivered to prevent and reduce the risk of further offending. • People have better access to the services they require, including welfare, health and wellbeing, housing and employability. • Life chances are improved through needs, including health, financial inclusion, housing and safety being addressed. • People develop positive relationships and more opportunities to participate and contribute through education, employment and leisure activities. • Individuals' resilience and capacity for change and self-management are enhanced.
<p>8 Geographical area (Inverclyde wide or a specific location)</p>	Inverclyde wide
<p>9 Is the policy likely to have an impact on any of the elements of the Council equality duty (if yes, please tick as appropriate)?</p>	<ul style="list-style-type: none"> <input type="checkbox"/> Eliminate unlawful discrimination, harassment and victimisation and other conduct prohibited by the Equality Act 2010 <input checked="" type="checkbox"/> Advance equality of opportunity between people from different groups <input checked="" type="checkbox"/> Foster good relations between people from different groups

10 Will those who may be directly or indirectly affected by this policy be involved in its development?

Yes, a series of service user interviews and focus groups have been undertaken (including a staff focus group). Details of these are given in the Participation Statement included in the Plan.
The Plan also gives further detail of how engagement and co-production will be further developed.

SECTION 2 – Impact on Protected Characteristics

Which of the protected characteristics will the policy have an impact upon? (see guidance for examples of key considerations under each characteristic)

Protected Characteristic	Impact					Reason/Comments
	Positive High	Low	Neutral	Negative High	Low	
Age	✓					A key focus of the plan is on prevention and early intervention. This includes working more closely with youth justice, ensuring a smooth transition into the adult criminal justice system. In addition, a further key action is that services are person-centred and people have equal access to services. This includes, for example, the older population of people who commit offences.
Disability	✓					As outlined above, the plan stipulates the intention of delivering a person-centred approach and ensuring equal access to services. This includes identifying any barriers to services.
Gender Reassignment			✓			There is no available evidence relating to this particular protected characteristic.
Pregnancy and maternity		✓				While there is a national focus on developing a new female custodial estate that will include pregnancy and maternity services; there is no specific actions identified in our local plan.
Race			✓			There is limited available evidence relating to this particular protected characteristic.
Religion or Belief			✓			There is limited available evidence relating to this particular protected characteristic.

Sex (Male or Female)	✓					There is a particular focus on evaluating current provision relating to domestic abuse with the intention of enhancing this.
Sexual Orientation			✓			There is no available evidence relating to this particular protected characteristic.
Other groups to consider (please give details) People who have multiple complex difficulties including for example learning disability, mental health issues, addiction.	✓					There is a wide range of research that indicates the multiple inequalities and the impact of these on people who have committed offences. A key focus of the plan is in improving joint-working with the intention of reducing these inequalities.

SECTION 3 – Evidence

What evidence do you have to help identify any potential impacts of the policy? (Evidence could include: consultations, surveys, focus groups, interviews, projects, user feedback, complaints, officer knowledge and experience, equalities monitoring data, publications, research, reports, local, national groups.)

Evidence	Details
Consultation/Engagement (including any carried out while developing the policy)	Please refer to the attached Participation Statement
Research	<ul style="list-style-type: none"> • Inverclyde Community Justice Profile includes a wide range of both primary and secondary data. Key information from this has been included in the Plan. Consideration was given to including limited information available regarding refugees; however, in view of the numbers being very low a decision was made not to include this to ensure such information could not be identifiable to individuals. • What Works research on reducing re-offending and effective interventions.
Officer's knowledge and experience (including feedback from frontline staff).	Please refer to the attached Participation Statement
Equalities monitoring data.	Where this has been available. There is an opportunity to raise this with Scottish Government and respective statutory partners with a view to ensure such information is recorded and made available.

<p>User feedback (including complaints)</p>	<p>Please refer to the attached Participation Statement. In addition, a key action in the Plan is developing a quality assurance framework that will incorporate service user feedback, not simply relating to service delivery, but moreover ensuring there are clear pathways and supports at transition periods and a “joined-up” approach.</p>
<p>Stakeholders Other</p>	<p>The consultation process will also be used to engage and involve a wide range of stakeholders.</p>
<p>What information gaps are there?</p>	<p>As indicated in the Participation Statement, this is the initial phase of gathering views from a broad range of stakeholders and collating data as part of a profile of information. During 2017 further engagement activity will be planned with stakeholders, including families affected (both adults and children), victim groups. There are currently gaps in information around certain protected characteristics including pregnancy and maternity, gender reassignment, sexual orientation and race.</p>

SECTION 4 – CONSEQUENCES OF ANALYSIS

What steps will you take in response to the findings of your analysis? Please select at least one of the following and give a brief explanation.		
1. Continue development with no changes		
2. Continue development with minor alterations	✓	As outlined in the Participation Statement, there has been extensive engagement and a period of consultation. Minor amendments have already been made to the plan to reflect these.
3. Continue development with major changes		
4. Discontinue development and consider alternatives (where relevant)		
How will the actual effect of the policy be monitored following implementation?		
<p>There are several key actions outlined in the plan that will help to monitor the effect following implementation. These include:</p> <ul style="list-style-type: none"> • Developing a performance framework for reporting purposes. • Developing a quality assurance framework to ensure continuous improvement. • Developing a Participation Strategy. • Undertake an annual self-evaluation. • Prepare and submit an Annual Report to Community Justice Scotland. 		
When is the policy due to be implemented?		
The plan will be submitted to Scottish Government on 31 st March, with the plan formally commencing on 1 st April. This is a five year plan.		

When will the policy be reviewed?

The plan will be reviewed on an annual basis.

What resources are available for the implementation of this policy? Have these resources changed?

Scottish Government has provided transitional funding for the period 2015 / 2016 and 2016 / 2017, with a commitment this may continue for 2017 / 2018 dependent on the Spending Review.

Scottish Government has placed an emphasis on “leverage of resources” for statutory partners to demonstrate in their community justice planning.

Name of Individual(s) who completed the Assessment

Name(s): Ann Wardlaw, Alex Meikle, Janice Boyd
 Position: Community Justice Lead Officer, Partnership Integration Manager (CVS), Equalities Officer
 Date: December / January 2016 / 2017

Authorised by

Name: Sharon McAlees
 Position: Chair of Inverclyde Community Justice Partnership
 Date: 19.01.17

Please send a copy of all completed forms to Janice Boyd, Equalities Officer at janice.boyd@inverclyde.gov.uk